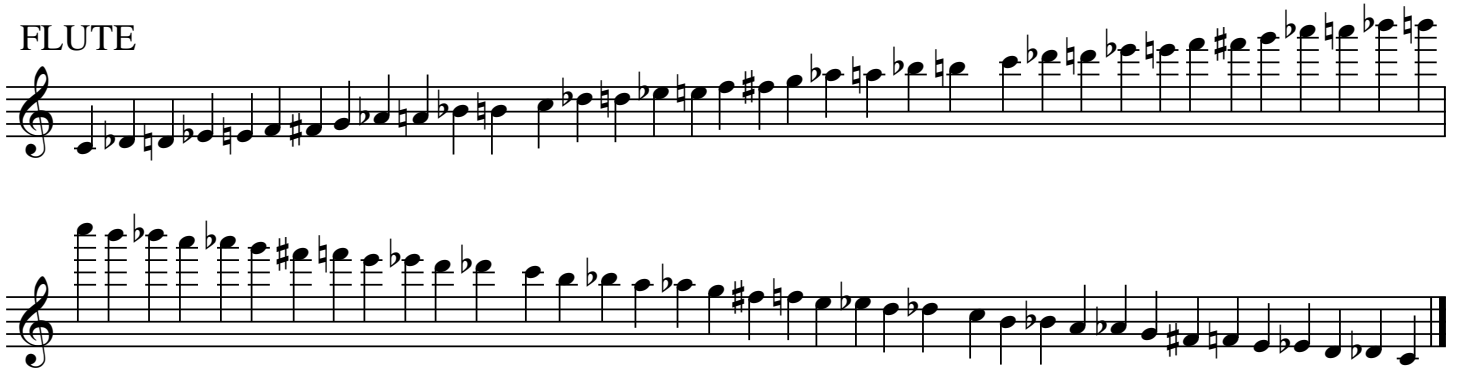


MTSBOA Sr. High Chromatic Scales

Minimum required range

FLUTE



Musical notation for the Flute part, showing two staves of chromatic scales. The first staff contains the ascending scale from C4 to C5, and the second staff contains the descending scale from C5 to C4. The notes are: C4, C#4, D4, D#4, E4, E#4, F4, F#4, G4, G#4, A4, A#4, B4, B#4, C5, C5, B5, B#5, A5, A#5, G5, G#5, F5, F#5, E5, E#5, D5, D#5, C5.

OBOE



Musical notation for the Oboe part, showing two staves of chromatic scales. The first staff contains the ascending scale from C4 to C5, and the second staff contains the descending scale from C5 to C4. The notes are: C4, C#4, D4, D#4, E4, E#4, F4, F#4, G4, G#4, A4, A#4, B4, B#4, C5, C5, B5, B#5, A5, A#5, G5, G#5, F5, F#5, E5, E#5, D5, D#5, C5.

B \flat & E \flat CLARINET



Musical notation for the B \flat & E \flat Clarinet part, showing two staves of chromatic scales. The first staff contains the ascending scale from C4 to C5, and the second staff contains the descending scale from C5 to C4. The notes are: C4, C#4, D4, D#4, E4, E#4, F4, F#4, G4, G#4, A4, A#4, B4, B#4, C5, C5, B5, B#5, A5, A#5, G5, G#5, F5, F#5, E5, E#5, D5, D#5, C5.

BASS & CONTRABASS CLARINET



Musical notation for the Bass & Contrabass Clarinet part, showing two staves of chromatic scales. The first staff contains the ascending scale from C4 to C5, and the second staff contains the descending scale from C5 to C4. The notes are: C4, C#4, D4, D#4, E4, E#4, F4, F#4, G4, G#4, A4, A#4, B4, B#4, C5, C5, B5, B#5, A5, A#5, G5, G#5, F5, F#5, E5, E#5, D5, D#5, C5.

ALTO & TENOR SAXOPHONE



Two staves of musical notation for Alto & Tenor Saxophone. The first staff begins with a treble clef, a key signature of one flat (B-flat), and a common time signature. The melody consists of a series of eighth and quarter notes, including chromatic passages. The second staff continues the melody, ending with a double bar line.

BARITONE SAXOPHONE



Two staves of musical notation for Baritone Saxophone. The first staff begins with a treble clef, a key signature of one flat (B-flat), and a common time signature. The melody consists of a series of eighth and quarter notes, including chromatic passages. The second staff continues the melody, ending with a double bar line.

BASSOON



Two staves of musical notation for Bassoon. The first staff begins with a bass clef, a key signature of one flat (B-flat), and a common time signature. The melody consists of a series of eighth and quarter notes, including chromatic passages. The second staff continues the melody, ending with a double bar line.

TRUMPET



Two staves of musical notation for Trumpet. The first staff begins with a treble clef, a key signature of one flat (B-flat), and a common time signature. The melody consists of a series of eighth and quarter notes, including chromatic passages. The second staff continues the melody, ending with a double bar line.

HORN

Two staves of musical notation for the Horn part. The first staff begins with a treble clef and a key signature of one flat (B-flat). The melody consists of a sequence of eighth and quarter notes, including chromatic descents and ascents. The second staff continues the melody, ending with a double bar line.

TROMBONE & EUPHONIUM

Two staves of musical notation for the Trombone & Euphonium part. The first staff begins with a bass clef and a key signature of one flat. The melody is written in a similar chromatic style to the Horn part. The second staff continues the melody, ending with a double bar line.

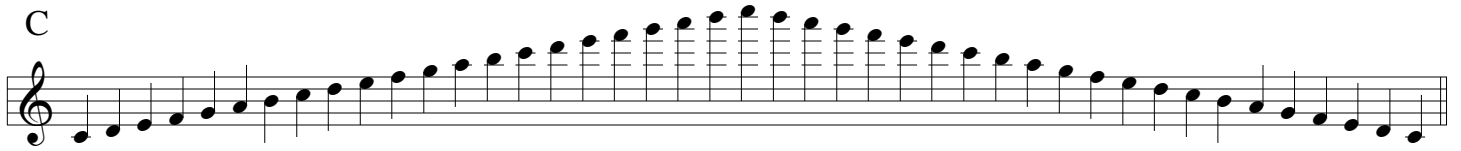
TUBA

Two staves of musical notation for the Tuba part. The first staff begins with a bass clef and a key signature of one flat. The melody is written in a similar chromatic style to the other parts. The second staff continues the melody, ending with a double bar line.

MTSBOA Senior High Flute Scale Sheet

minimum requirements, tempo quarter note = 120

C



A musical staff in treble clef with a C-clef. The key signature has no sharps or flats. The scale consists of 13 notes: C, D, E, F, G, A, B, C, B, A, G, F, E, D, C. The notes are written as quarter notes, with a slight upward curve over the ascending half and a slight downward curve under the descending half.

D \flat



A musical staff in treble clef with a D-flat clef. The key signature has two flats (B-flat and E-flat). The scale consists of 13 notes: D-flat, E-flat, F, G, A, B-flat, C, D, C, B-flat, A, G, F, E-flat, D-flat.

D



A musical staff in treble clef with a D-clef. The key signature has two sharps (F-sharp and C-sharp). The scale consists of 13 notes: D, E, F-sharp, G, A, B, C, D, C, B, A, G, F-sharp, E, D.

E \flat



A musical staff in treble clef with an E-flat clef. The key signature has three flats (B-flat, E-flat, and A-flat). The scale consists of 13 notes: E-flat, F, G, A, B-flat, C, D, E, D, C, B-flat, A, G, F, E-flat.

E



A musical staff in treble clef with an E-clef. The key signature has three sharps (F-sharp, C-sharp, and G-sharp). The scale consists of 13 notes: E, F-sharp, G-sharp, A, B, C, D, E, D, C, B, A, G-sharp, F-sharp, E.

F



A musical staff in treble clef with an F-clef. The key signature has one flat (B-flat). The scale consists of 13 notes: F, G, A, B-flat, C, D, E, F, E, D, C, B-flat, A, G, F.

G \flat



A musical staff in treble clef with a G-flat clef. The key signature has four flats (B-flat, E-flat, A-flat, and D-flat). The scale consists of 13 notes: G-flat, A-flat, B-flat, C, D, E-flat, F, G, F, E-flat, D, C, B-flat, A-flat, G-flat.

G



A musical staff in treble clef with a G-clef. The key signature has one sharp (F-sharp). The scale consists of 13 notes: G, A, B, C, D, E, F-sharp, G, F, E, D, C, B, A, G.

A \flat



A musical staff in treble clef with an A-flat clef. The key signature has four flats (B-flat, E-flat, A-flat, and D-flat). The scale consists of 13 notes: A-flat, B-flat, C, D, E-flat, F, G, A, G, F, E-flat, D, C, B-flat, A-flat.

A



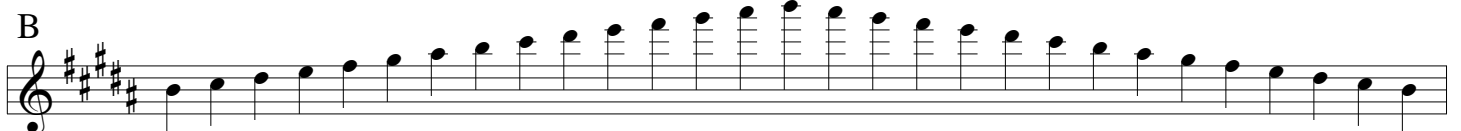
A musical staff in treble clef with an A-clef. The key signature has three sharps (F-sharp, C-sharp, and G-sharp). The scale consists of 13 notes: A, B, C, D, E, F-sharp, G-sharp, A, G, F, E, D, C, B, A.

B \flat



A musical staff in treble clef with a B-flat clef. The key signature has two flats (B-flat and E-flat). The scale consists of 13 notes: B-flat, C, D, E-flat, F, G, A, B, A, G, F, E-flat, D, C, B-flat.

B



A musical staff in treble clef with a B-clef. The key signature has four sharps (F-sharp, C-sharp, G-sharp, and D-sharp). The scale consists of 13 notes: B, C, D, E, F-sharp, G-sharp, A, B, A, G, F, E, D, C, B.

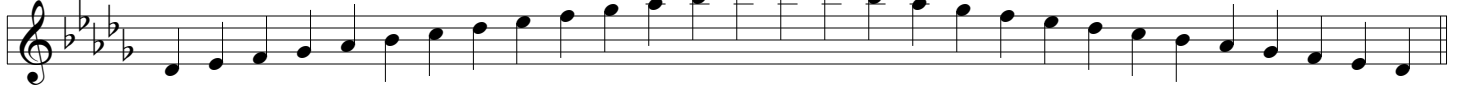
MTSBOA Senior High Oboe Scale Sheet

minimum requirements, tempo quarter note = 120

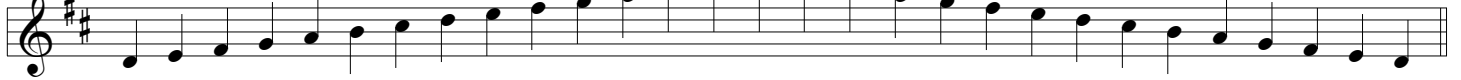
C



D \flat



D



E \flat



E



F



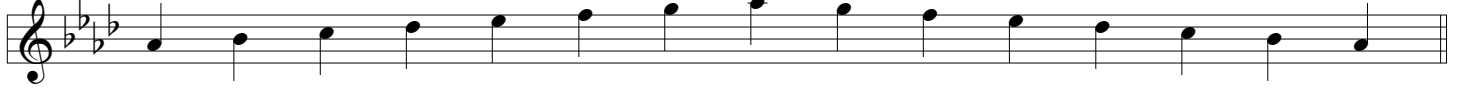
G \flat



G



A \flat



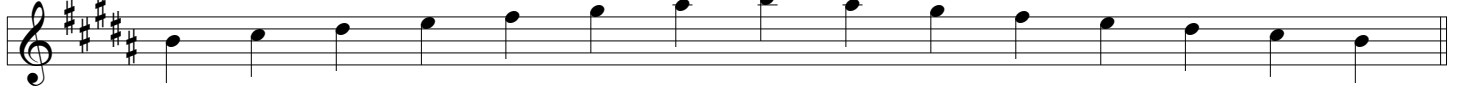
A



B \flat




B



MTSBOA Senior High Clarinet Scale Sheet

minimum requirements, tempo quarter note = 120

E



Musical staff for E major scale (E, F#, G#, A, B, C#, D, E). The scale is written in treble clef with a key signature of three sharps. It consists of an ascending and a descending line of quarter notes.

F




Musical staff for F major scale (F, G, A, Bb, C, D, E, F). The scale is written in treble clef with a key signature of one flat. It consists of an ascending and a descending line of quarter notes.

Gb



Musical staff for Gb major scale (Gb, Ab, Bb, Cb, Db, Eb, Fb, Gb). The scale is written in treble clef with a key signature of six flats. It consists of an ascending and a descending line of quarter notes.

G



Musical staff for G major scale (G, A, B, C, D, E, F#, G). The scale is written in treble clef with a key signature of one sharp. It consists of an ascending and a descending line of quarter notes.

Ab



Musical staff for Ab major scale (Ab, Bb, C, Db, Eb, F, G, Ab). The scale is written in treble clef with a key signature of four flats. It consists of an ascending and a descending line of quarter notes.

A



Musical staff for A major scale (A, B, C, D, E, F#, G, A). The scale is written in treble clef with a key signature of three sharps. It consists of an ascending and a descending line of quarter notes.

Bb



Musical staff for Bb major scale (Bb, C, D, Eb, F, G, Ab, Bb). The scale is written in treble clef with a key signature of two flats. It consists of an ascending and a descending line of quarter notes.

B



Musical staff for B major scale (B, C#, D#, E, F#, G#, A, B). The scale is written in treble clef with a key signature of two sharps. It consists of an ascending and a descending line of quarter notes.

C



Musical staff for C major scale (C, D, E, F, G, A, B, C). The scale is written in treble clef with a key signature of no sharps or flats. It consists of an ascending and a descending line of quarter notes.

Db



Musical staff for Db major scale (Db, Eb, F, Gb, Ab, Bb, C, Db). The scale is written in treble clef with a key signature of five flats. It consists of an ascending and a descending line of quarter notes.

D



Musical staff for D major scale (D, E, F#, G, A, B, C#, D). The scale is written in treble clef with a key signature of two sharps. It consists of an ascending and a descending line of quarter notes.

Eb



Musical staff for Eb major scale (Eb, F, G, Ab, Bb, C, Db, Eb). The scale is written in treble clef with a key signature of three flats. It consists of an ascending and a descending line of quarter notes.

MTSBOA Senior High Bass & Contrabass Clarinet Scale Sheet

minimum requirements, tempo quarter note = 120

E



F



Gb



G



Ab



A



Bb



B



C



Db



D



Eb



MTSBOA Senior High Bassoon Scale Sheet

minimum requirements, tempo quarter note = 120

B \flat

A musical staff in bass clef with a key signature of two flats (B-flat and E-flat). The scale consists of 12 quarter notes: B-flat, C, D, E-flat, F, G, A, B-flat, C, D, E-flat, F.

B

A musical staff in bass clef with a key signature of three sharps (F-sharp, C-sharp, G-sharp). The scale consists of 12 quarter notes: B, C, D, E, F-sharp, G, A, B, C, D, E, F-sharp.

C

A musical staff in bass clef with a key signature of no sharps or flats. The scale consists of 12 quarter notes: C, D, E, F, G, A, B, C, D, E, F, G.

D \flat

A musical staff in bass clef with a key signature of three flats (B-flat, E-flat, A-flat). The scale consists of 12 quarter notes: D-flat, E-flat, F, G, A-flat, B, C, D-flat, E-flat, F, G, A-flat.

D

A musical staff in bass clef with a key signature of two sharps (F-sharp, C-sharp). The scale consists of 12 quarter notes: D, E, F-sharp, G, A, B, C, D, E, F-sharp, G, A.

E \flat

A musical staff in bass clef with a key signature of three flats (B-flat, E-flat, A-flat). The scale consists of 12 quarter notes: E-flat, F, G, A, B, C, D, E-flat, F, G, A, B.

E

A musical staff in bass clef with a key signature of three sharps (F-sharp, C-sharp, G-sharp). The scale consists of 12 quarter notes: E, F-sharp, G, A, B, C, D, E, F-sharp, G, A, B.

F

A musical staff in bass clef with a key signature of one flat (B-flat). The scale consists of 12 quarter notes: F, G, A, B-flat, C, D, E, F, G, A, B-flat, C.

G \flat

A musical staff in bass clef with a key signature of four flats (B-flat, E-flat, A-flat, D-flat). The scale consists of 12 quarter notes: G-flat, A-flat, B-flat, C, D-flat, E-flat, F, G-flat, A-flat, B-flat, C, D-flat.

G

A musical staff in bass clef with a key signature of one sharp (F-sharp). The scale consists of 12 quarter notes: G, A, B, C, D, E, F-sharp, G, A, B, C, D.

A \flat

A musical staff in bass clef with a key signature of four flats (B-flat, E-flat, A-flat, D-flat). The scale consists of 12 quarter notes: A-flat, B-flat, C, D-flat, E-flat, F, G, A-flat, B-flat, C, D-flat, E-flat.

A

A musical staff in bass clef with a key signature of three sharps (F-sharp, C-sharp, G-sharp). The scale consists of 12 quarter notes: A, B, C, D, E, F-sharp, G, A, B, C, D, E.

MTSBOA Senior High Alto & Tenor Saxophone Scale Sheet

minimum requirements, tempo quarter note = 120

B \flat



Musical staff for B \flat major scale, starting on B \flat (F4) and ending on B \flat (F4). The scale consists of 12 notes: B \flat , C, D, E \flat , F, G, A \flat , B \flat , C, D, E \flat , F.

B



Musical staff for B major scale, starting on B (G4) and ending on B (G4). The scale consists of 12 notes: B, C \sharp , D \sharp , E \sharp , F \sharp , G \sharp , A \sharp , B, C \sharp , D \sharp , E \sharp , F \sharp .

C



Musical staff for C major scale, starting on C (C4) and ending on C (C4). The scale consists of 12 notes: C, D, E, F, G, A, B, C, D, E, F, G.

C \sharp



Musical staff for C \sharp major scale, starting on C \sharp (C4) and ending on C \sharp (C4). The scale consists of 12 notes: C \sharp , D \sharp , E \sharp , F \sharp , G \sharp , A \sharp , B, C \sharp , D \sharp , E \sharp , F \sharp , G \sharp .

D



Musical staff for D major scale, starting on D (D4) and ending on D (D4). The scale consists of 12 notes: D, E, F \sharp , G \sharp , A \sharp , B, C \sharp , D, E, F \sharp , G \sharp , A \sharp .

E \flat



Musical staff for E \flat major scale, starting on E \flat (D4) and ending on E \flat (D4). The scale consists of 12 notes: E \flat , F, G, A, B, C, D, E \flat , F, G, A, B.

E



Musical staff for E major scale, starting on E (E4) and ending on E (E4). The scale consists of 12 notes: E, F \sharp , G \sharp , A \sharp , B, C \sharp , D \sharp , E, F \sharp , G \sharp , A \sharp , B.

F



Musical staff for F major scale, starting on F (F4) and ending on F (F4). The scale consists of 12 notes: F, G, A, B \flat , C, D, E \flat , F, G, A, B \flat , C.

F \sharp



Musical staff for F \sharp major scale, starting on F \sharp (F4) and ending on F \sharp (F4). The scale consists of 12 notes: F \sharp , G \sharp , A \sharp , B, C \sharp , D \sharp , E \sharp , F \sharp , G \sharp , A \sharp , B, C \sharp .

G



Musical staff for G major scale, starting on G (G4) and ending on G (G4). The scale consists of 12 notes: G, A, B, C \sharp , D \sharp , E \sharp , F \sharp , G, A, B, C \sharp , D \sharp .

A \flat



Musical staff for A \flat major scale, starting on A \flat (G4) and ending on A \flat (G4). The scale consists of 12 notes: A \flat , B \flat , C, D, E, F, G, A \flat , B \flat , C, D, E.

A



Musical staff for A major scale, starting on A (A4) and ending on A (A4). The scale consists of 12 notes: A, B, C, D, E, F \sharp , G \sharp , A, B, C, D, E.

MTSBOA Senior High Baritone Saxophone Scale Sheet

minimum requirements, tempo quarter note = 120

B \flat



A musical staff in treble clef with a B-flat key signature (two flats). The scale is written in quarter notes, ascending from B-flat to B-flat an octave higher, and then descending back to B-flat.

B



A musical staff in treble clef with a B major key signature (three sharps). The scale is written in quarter notes, ascending from B to B an octave higher, and then descending back to B.

C



A musical staff in treble clef with a C major key signature (no sharps or flats). The scale is written in quarter notes, ascending from C to C an octave higher, and then descending back to C.

C \sharp



A musical staff in treble clef with a C-sharp major key signature (four sharps). The scale is written in quarter notes, ascending from C-sharp to C-sharp an octave higher, and then descending back to C-sharp.

D



A musical staff in treble clef with a D major key signature (two sharps). The scale is written in quarter notes, ascending from D to D an octave higher, and then descending back to D.

E \flat



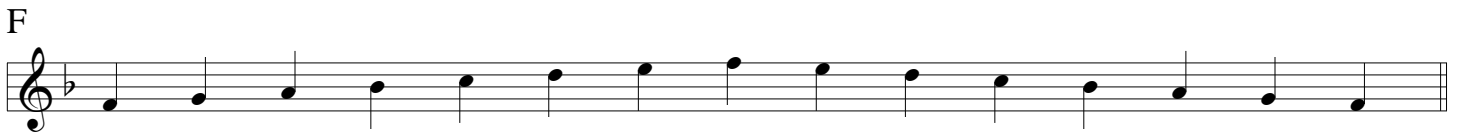
A musical staff in treble clef with an E-flat major key signature (three flats). The scale is written in quarter notes, ascending from E-flat to E-flat an octave higher, and then descending back to E-flat.

E



A musical staff in treble clef with an E major key signature (three sharps). The scale is written in quarter notes, ascending from E to E an octave higher, and then descending back to E.

F



A musical staff in treble clef with an F major key signature (one flat). The scale is written in quarter notes, ascending from F to F an octave higher, and then descending back to F.

F \sharp



A musical staff in treble clef with an F-sharp major key signature (four sharps). The scale is written in quarter notes, ascending from F-sharp to F-sharp an octave higher, and then descending back to F-sharp.

G



A musical staff in treble clef with a G major key signature (one sharp). The scale is written in quarter notes, ascending from G to G an octave higher, and then descending back to G.

A \flat



A musical staff in treble clef with an A-flat major key signature (four flats). The scale is written in quarter notes, ascending from A-flat to A-flat an octave higher, and then descending back to A-flat.

A



A musical staff in treble clef with an A major key signature (three sharps). The scale is written in quarter notes, ascending from A to A an octave higher, and then descending back to A.

MTSBOA Senior High Trumpet Scale Sheet

minimum requirements, tempo quarter note = 120

G



A \flat



A



B \flat



B



C



D \flat



D



E \flat



E



F



F \sharp



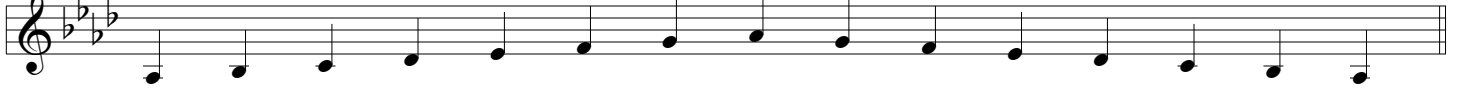
MTSBOA Senior High Horn Scale Sheet

minimum requirements, tempo quarter note = 120

G



A \flat



A



B \flat



B



C



D \flat



D



E \flat



E



F



G \flat



MTSBOA Senior High Trombone & Euphonium Scale Sheet

minimum requirements, tempo quarter note = 120

F



Gb



G



Ab



A



Bb



B



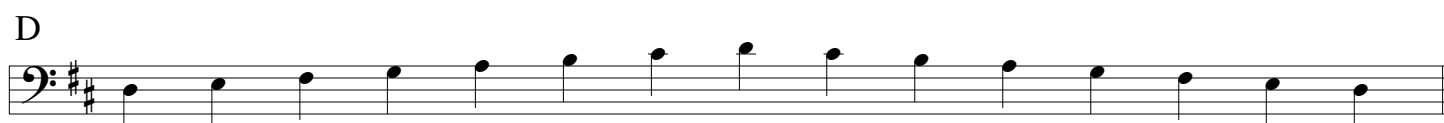
C



Db



D



Eb



E



MTSBOA Senior High Tuba Scale Sheet

minimum requirements, tempo quarter note = 120

F



Gb



G



Ab



A



Bb



B



C



Db



D



Eb



E



MTSBOA Senior High Mallet Scale Sheet

minimum requirements, tempo quarter note = 120

G



A \flat



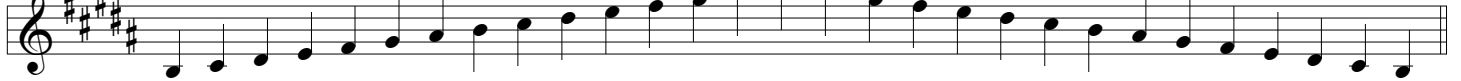
A



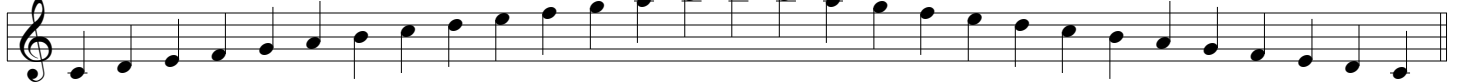
B \flat



B



C



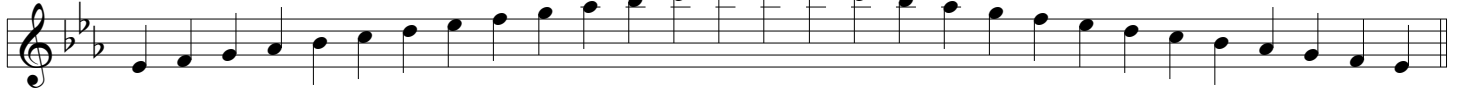
D \flat



D



E \flat



E



F



G \flat



MTSBOA Senior High Violin Scale Sheet

minimum requirements, tempo quarter note = 120

This sheet contains 12 violin scale exercises, each in a different key signature. Each exercise consists of two lines of music: an ascending scale followed by a descending scale. The keys are: G major, A-flat major, A major, B-flat major, B major, C-flat major, C major, C-sharp major, D-flat major, D major, E-flat major, and E major. The scales are written in treble clef with a 2/4 time signature. The tempo is indicated as quarter note = 120.

G

A \flat

A

B \flat

B

C \flat

C

C \sharp

D \flat

D

E \flat

E

F

F \sharp

G \flat

MTSBOA Senior High Viola Scale Sheet

minimum requirements, tempo quarter note = 120

C



Musical staff for C major scale. The staff is in 2/4 time and contains two lines of music. The first line is an ascending scale from C4 to C5. The second line is a descending scale from C5 to C4. The key signature has no sharps or flats.

C#



Musical staff for C# major scale. The staff is in 2/4 time and contains two lines of music. The first line is an ascending scale from C#4 to C#5. The second line is a descending scale from C#5 to C#4. The key signature has one sharp (F#).

Db



Musical staff for Db major scale. The staff is in 2/4 time and contains two lines of music. The first line is an ascending scale from Db4 to Db5. The second line is a descending scale from Db5 to Db4. The key signature has two flats (Bb, Eb).

D



Musical staff for D major scale. The staff is in 2/4 time and contains two lines of music. The first line is an ascending scale from D4 to D5. The second line is a descending scale from D5 to D4. The key signature has two sharps (F#, C#).

Eb



Musical staff for Eb major scale. The staff is in 2/4 time and contains two lines of music. The first line is an ascending scale from Eb4 to Eb5. The second line is a descending scale from Eb5 to Eb4. The key signature has three flats (Bb, Eb, Ab).

E



Musical staff for E major scale. The staff is in 2/4 time and contains two lines of music. The first line is an ascending scale from E4 to E5. The second line is a descending scale from E5 to E4. The key signature has three sharps (F#, C#, G#).

F



Musical staff for F major scale. The staff is in 2/4 time and contains two lines of music. The first line is an ascending scale from F4 to F5. The second line is a descending scale from F5 to F4. The key signature has one flat (Bb).

F#



Musical staff for F# major scale. The staff is in 2/4 time and contains two lines of music. The first line is an ascending scale from F#4 to F#5. The second line is a descending scale from F#5 to F#4. The key signature has four sharps (F#, C#, G#, D#).

Gb



Musical staff for Gb major scale. The staff is in 2/4 time and contains two lines of music. The first line is an ascending scale from Gb4 to Gb5. The second line is a descending scale from Gb5 to Gb4. The key signature has four flats (Bb, Eb, Ab, Db).

G



Musical staff for G major scale. The staff is in 2/4 time and contains two lines of music. The first line is an ascending scale from G4 to G5. The second line is a descending scale from G5 to G4. The key signature has one sharp (F#).

Ab




Musical staff for Ab major scale. The staff is in 2/4 time and contains two lines of music. The first line is an ascending scale from Ab4 to Ab5. The second line is a descending scale from Ab5 to Ab4. The key signature has two flats (Bb, Eb).

A



Musical staff for A major scale. The staff is in 2/4 time and contains two lines of music. The first line is an ascending scale from A4 to A5. The second line is a descending scale from A5 to A4. The key signature has three sharps (F#, C#, G#).

Bb



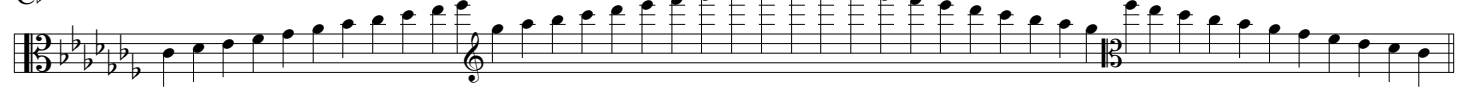
Musical staff for Bb major scale. The staff is in 2/4 time and contains two lines of music. The first line is an ascending scale from Bb4 to Bb5. The second line is a descending scale from Bb5 to Bb4. The key signature has two flats (Bb, Eb).

B



Musical staff for B major scale. The staff is in 2/4 time and contains two lines of music. The first line is an ascending scale from B4 to B5. The second line is a descending scale from B5 to B4. The key signature has four sharps (F#, C#, G#, D#).

Cb



Musical staff for Cb major scale. The staff is in 2/4 time and contains two lines of music. The first line is an ascending scale from Cb4 to Cb5. The second line is a descending scale from Cb5 to Cb4. The key signature has five flats (Bb, Eb, Ab, Db, Gb).

MTSBOA Senior High Cello Scale Sheet

minimum requirements, tempo quarter note = 120

C



A musical staff for the C major scale on the cello. The key signature has no sharps or flats. The scale is written in a single line with a bass clef. It consists of two octaves of ascending and descending eighth notes, with a double bar line in the middle.

C#



A musical staff for the C# major scale on the cello. The key signature has two sharps (F# and C#). The scale is written in a single line with a bass clef. It consists of two octaves of ascending and descending eighth notes, with a double bar line in the middle.

Db



A musical staff for the Db major scale on the cello. The key signature has five flats (Bb, Eb, Ab, Db, Gb). The scale is written in a single line with a bass clef. It consists of two octaves of ascending and descending eighth notes, with a double bar line in the middle.

D



A musical staff for the D major scale on the cello. The key signature has two sharps (F# and C#). The scale is written in a single line with a bass clef. It consists of two octaves of ascending and descending eighth notes, with a double bar line in the middle.

Eb



A musical staff for the Eb major scale on the cello. The key signature has three flats (Bb, Eb, Ab). The scale is written in a single line with a bass clef. It consists of two octaves of ascending and descending eighth notes, with a double bar line in the middle.

E



A musical staff for the E major scale on the cello. The key signature has three sharps (F#, C#, G#). The scale is written in a single line with a bass clef. It consists of two octaves of ascending and descending eighth notes, with a double bar line in the middle.

F



A musical staff for the F major scale on the cello. The key signature has one flat (Bb). The scale is written in a single line with a bass clef. It consists of two octaves of ascending and descending eighth notes, with a double bar line in the middle.

F#




A musical staff for the F# major scale on the cello. The key signature has four sharps (F#, C#, G#, D#). The scale is written in a single line with a bass clef. It consists of two octaves of ascending and descending eighth notes, with a double bar line in the middle.

Gb



A musical staff for the Gb major scale on the cello. The key signature has six flats (Bb, Eb, Ab, Db, Gb, Cb). The scale is written in a single line with a bass clef. It consists of two octaves of ascending and descending eighth notes, with a double bar line in the middle.

G



A musical staff for the G major scale on the cello. The key signature has one sharp (F#). The scale is written in a single line with a bass clef. It consists of two octaves of ascending and descending eighth notes, with a double bar line in the middle.

Ab



A musical staff for the Ab major scale on the cello. The key signature has four flats (Bb, Eb, Ab, Db). The scale is written in a single line with a bass clef. It consists of two octaves of ascending and descending eighth notes, with a double bar line in the middle.

A



A musical staff for the A major scale on the cello. The key signature has three sharps (F#, C#, G#). The scale is written in a single line with a bass clef. It consists of two octaves of ascending and descending eighth notes, with a double bar line in the middle.

Bb



A musical staff for the Bb major scale on the cello. The key signature has two flats (Eb, Ab). The scale is written in a single line with a bass clef. It consists of two octaves of ascending and descending eighth notes, with a double bar line in the middle.

B



A musical staff for the B major scale on the cello. The key signature has four sharps (F#, C#, G#, D#). The scale is written in a single line with a bass clef. It consists of two octaves of ascending and descending eighth notes, with a double bar line in the middle.

Cb



A musical staff for the Cb major scale on the cello. The key signature has seven flats (Bb, Eb, Ab, Db, Gb, Cb, Fb). The scale is written in a single line with a bass clef. It consists of two octaves of ascending and descending eighth notes, with a double bar line in the middle.

MTSBOA Senior High Double Bass Scale Sheet

minimum requirements, tempo quarter note = 120

E



Musical staff for E major scale. The key signature has three sharps (F#, C#, G#). The scale is written in bass clef, starting on E2 and ending on E3. The notes are: E, F#, G, A, B, C#, D, E, F#, G, A, B, C#, D, E, F#, G, A, B, C#, D, E, F#, G, A, B, C#, D, E.

F



Musical staff for F major scale. The key signature has one flat (Bb). The scale is written in bass clef, starting on F2 and ending on F3. The notes are: F, G, A, Bb, C, D, E, F, G, A, Bb, C, D, E, F, G, A, Bb, C, D, E, F, G, A, Bb, C, D, E, F.

F#



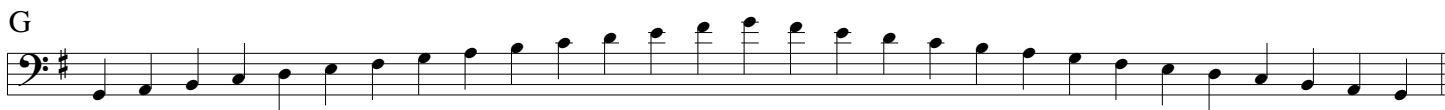
Musical staff for F# major scale. The key signature has four sharps (F#, C#, G#, D#). The scale is written in bass clef, starting on F#2 and ending on F#3. The notes are: F#, G#, A, B, C#, D#, E, F#, G#, A, B, C#, D#, E, F#, G#, A, B, C#, D#, E, F#, G#, A, B, C#, D#, E, F#.

Gb



Musical staff for Gb major scale. The key signature has five flats (Fb, Cb, Gb, Db, Ab). The scale is written in bass clef, starting on Gb2 and ending on Gb3. The notes are: Gb, Ab, Bb, Cb, Db, Eb, Fb, Gb, Ab, Bb, Cb, Db, Eb, Fb, Gb, Ab, Bb, Cb, Db, Eb, Fb, Gb, Ab, Bb, Cb, Db, Eb, Fb, Gb.

G



Musical staff for G major scale. The key signature has one sharp (F#). The scale is written in bass clef, starting on G2 and ending on G3. The notes are: G, A, B, C, D, E, F#, G, A, B, C, D, E, F#, G, A, B, C, D, E, F#, G, A, B, C, D, E, F#, G.

Ab



Musical staff for Ab major scale. The key signature has four flats (Bb, Eb, Ab, Db). The scale is written in bass clef, starting on Ab2 and ending on Ab3. The notes are: Ab, Bb, Cb, Db, Eb, Fb, Gb, Ab, Bb, Cb, Db, Eb, Fb, Gb, Ab, Bb, Cb, Db, Eb, Fb, Gb, Ab, Bb, Cb, Db, Eb, Fb, Gb.

A



Musical staff for A major scale. The key signature has three sharps (F#, C#, G#). The scale is written in bass clef, starting on A2 and ending on A3. The notes are: A, B, C, D, E, F#, G, A, B, C, D, E, F#, G, A, B, C, D, E, F#, G, A, B, C, D, E, F#, G, A.

Bb



Musical staff for Bb major scale. The key signature has two flats (Bb, Eb). The scale is written in bass clef, starting on Bb2 and ending on Bb3. The notes are: Bb, Cb, Db, Eb, Fb, Gb, Ab, Bb, Cb, Db, Eb, Fb, Gb, Ab, Bb, Cb, Db, Eb, Fb, Gb, Ab, Bb, Cb, Db, Eb, Fb, Gb.

B



Musical staff for B major scale. The key signature has two sharps (F#, C#). The scale is written in bass clef, starting on B2 and ending on B3. The notes are: B, C, D, E, F#, G, A, B, C, D, E, F#, G, A, B, C, D, E, F#, G, A, B, C, D, E, F#, G, A, B.

Cb



Musical staff for Cb major scale. The key signature has seven flats (Bb, Eb, Ab, Db, Gb, Cb, Fb). The scale is written in bass clef, starting on Cb2 and ending on Cb3. The notes are: Cb, Db, Eb, Fb, Gb, Ab, Bb, Cb, Db, Eb, Fb, Gb, Ab, Bb, Cb, Db, Eb, Fb, Gb, Ab, Bb, Cb, Db, Eb, Fb, Gb.

C



Musical staff for C major scale. The key signature has no sharps or flats. The scale is written in bass clef, starting on C2 and ending on C3. The notes are: C, D, E, F, G, A, B, C, D, E, F, G, A, B, C, D, E, F, G, A, B, C, D, E, F, G, A, B, C.

C#



Musical staff for C# major scale. The key signature has one sharp (F#). The scale is written in bass clef, starting on C#2 and ending on C#3. The notes are: C#, D, E, F#, G, A, B, C#, D, E, F#, G, A, B, C#, D, E, F#, G, A, B, C#, D, E, F#, G, A, B, C#.

Db



Musical staff for Db major scale. The key signature has five flats (Bb, Eb, Ab, Db, Gb). The scale is written in bass clef, starting on Db2 and ending on Db3. The notes are: Db, Eb, Fb, Gb, Ab, Bb, Cb, Db, Eb, Fb, Gb, Ab, Bb, Cb, Db, Eb, Fb, Gb, Ab, Bb, Cb, Db, Eb, Fb, Gb.

D



Musical staff for D major scale. The key signature has two sharps (F#, C#). The scale is written in bass clef, starting on D2 and ending on D3. The notes are: D, E, F#, G, A, B, C#, D, E, F#, G, A, B, C#, D, E, F#, G, A, B, C#, D, E, F#, G, A, B, C#, D.

Eb



Musical staff for Eb major scale. The key signature has three flats (Bb, Eb, Ab). The scale is written in bass clef, starting on Eb2 and ending on Eb3. The notes are: Eb, Fb, Gb, Ab, Bb, Cb, Db, Eb, Fb, Gb, Ab, Bb, Cb, Db, Eb, Fb, Gb, Ab, Bb, Cb, Db, Eb, Fb, Gb.