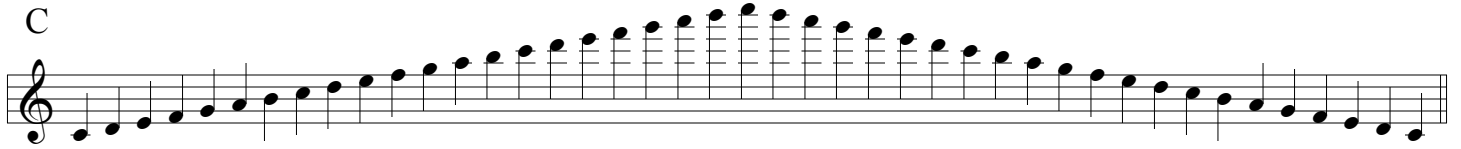


MTSBOA High School Flute Scale Sheet

minimum requirements, tempo quarter note = 120

C



A musical staff in treble clef with a C-clef. The key signature has no sharps or flats. The scale consists of 13 notes: C, D, E, F, G, A, B, C, B, A, G, F, E, D, C. The notes are written as quarter notes, with a slight upward curve over the ascending half and a slight downward curve under the descending half.

D \flat



A musical staff in treble clef with a D-flat-clef. The key signature has two flats: B-flat and E-flat. The scale consists of 13 notes: D-flat, E-flat, F, G, A, B-flat, C, D-flat, C, B-flat, A, G, F, E-flat, D-flat.

D



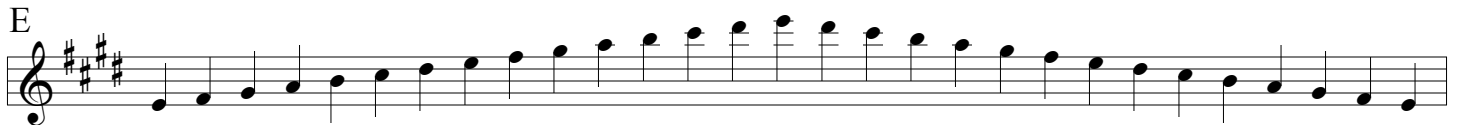
A musical staff in treble clef with a D-clef. The key signature has two sharps: F-sharp and C-sharp. The scale consists of 13 notes: D, E, F-sharp, G, A, B, C, D, C, B, A, G, F-sharp, E, D.

E \flat



A musical staff in treble clef with an E-flat-clef. The key signature has three flats: B-flat, E-flat, and A-flat. The scale consists of 13 notes: E-flat, F, G, A, B-flat, C, D, E-flat, D, C, B-flat, A, G, F, E-flat.

E



A musical staff in treble clef with an E-clef. The key signature has three sharps: F-sharp, C-sharp, and G-sharp. The scale consists of 13 notes: E, F-sharp, G-sharp, A, B, C, D, E, D, C, B, A, G-sharp, F-sharp, E.

F




A musical staff in treble clef with an F-clef. The key signature has one flat: B-flat. The scale consists of 13 notes: F, G, A, B-flat, C, D, E, F, E, D, C, B-flat, A, G, F.

G \flat



A musical staff in treble clef with a G-flat-clef. The key signature has four flats: F, C, G, and D-flat. The scale consists of 13 notes: G-flat, A, B-flat, C, D, E-flat, F, G-flat, F, E-flat, D, C, B-flat, A, G-flat.

G



A musical staff in treble clef with a G-clef. The key signature has one sharp: F-sharp. The scale consists of 13 notes: G, A, B, C, D, E, F-sharp, G, F-sharp, E, D, C, B, A, G.

A \flat



A musical staff in treble clef with an A-flat-clef. The key signature has four flats: F, C, G, and D-flat. The scale consists of 13 notes: A-flat, B-flat, C, D, E-flat, F, G, A-flat, G, F, E-flat, D, C, B-flat, A-flat.

A



A musical staff in treble clef with an A-clef. The key signature has three sharps: F-sharp, C-sharp, and G-sharp. The scale consists of 13 notes: A, B, C, D, E, F-sharp, G-sharp, A, G-sharp, F-sharp, E, D, C, B, A.

B \flat



A musical staff in treble clef with a B-flat-clef. The key signature has two flats: F and C. The scale consists of 13 notes: B-flat, C, D, E, F, G, A, B-flat, A, G, F, E, D, C, B-flat.

B



A musical staff in treble clef with a B-clef. The key signature has four sharps: F-sharp, C-sharp, G-sharp, and D-sharp. The scale consists of 13 notes: B, C, D, E, F-sharp, G-sharp, A, B, A, G-sharp, F-sharp, E, D, C, B.

MTSBOA High School Oboe Scale Sheet

minimum requirements, tempo quarter note = 120

C



D \flat



D



E \flat



E



F



G \flat



G



A \flat



A



B \flat



B



MTSBOA High School Clarinet Scale Sheet

minimum requirements, tempo quarter note = 120

concert pitch for
B \flat clar E \flat clar

E D G

Musical staff for E major scale. The key signature has three sharps (F#, C#, G#). The scale is written in treble clef, starting on E4 and ending on E5. The notes are: E, F#, G, A, B, C#, D, E, F#, G, A, B, C#, D, E.

F E \flat A \flat

Musical staff for F major scale. The key signature has one flat (B \flat). The scale is written in treble clef, starting on F4 and ending on F5. The notes are: F, G, A, B, C, D, E, F, G, A, B, C, D, E, F.

G \flat E A

Musical staff for G \flat major scale. The key signature has two flats (B \flat , E \flat). The scale is written in treble clef, starting on G \flat 4 and ending on G \flat 5. The notes are: G \flat , A \flat , B \flat , C, D, E, F, G \flat , A \flat , B \flat , C, D, E, F, G \flat .

G F B \flat

Musical staff for G major scale. The key signature has one sharp (F#). The scale is written in treble clef, starting on G4 and ending on G5. The notes are: G, A, B, C, D, E, F#, G, A, B, C, D, E, F#, G.

A \flat G \flat B

Musical staff for A \flat major scale. The key signature has three flats (B \flat , E \flat , A \flat). The scale is written in treble clef, starting on A \flat 4 and ending on A \flat 5. The notes are: A \flat , B \flat , C, D, E \flat , F, G, A \flat , B \flat , C, D, E \flat , F, G, A \flat .

A G C

Musical staff for A major scale. The key signature has two sharps (F#, C#). The scale is written in treble clef, starting on A4 and ending on A5. The notes are: A, B, C, D, E, F#, G, A, B, C, D, E, F#, G, A.

B \flat A \flat D \flat

Musical staff for B \flat major scale. The key signature has two flats (B \flat , E \flat). The scale is written in treble clef, starting on B \flat 4 and ending on B \flat 5. The notes are: B \flat , C, D, E \flat , F, G, A, B \flat , C, D, E \flat , F, G, A, B \flat .

B A D

Musical staff for B major scale. The key signature has two sharps (F#, C#). The scale is written in treble clef, starting on B4 and ending on B5. The notes are: B, C, D, E, F#, G, A, B, C, D, E, F#, G, A, B.

C B \flat E \flat

Musical staff for C major scale. The key signature has no sharps or flats. The scale is written in treble clef, starting on C4 and ending on C5. The notes are: C, D, E, F, G, A, B, C, D, E, F, G, A, B, C.

D \flat B E

Musical staff for D \flat major scale. The key signature has three flats (B \flat , E \flat , A \flat). The scale is written in treble clef, starting on D \flat 4 and ending on D \flat 5. The notes are: D \flat , E \flat , F, G, A \flat , B, C, D \flat , E \flat , F, G, A \flat , B, C, D \flat .

D C F

Musical staff for D major scale. The key signature has two sharps (F#, C#). The scale is written in treble clef, starting on D4 and ending on D5. The notes are: D, E, F, G, A, B, C#, D, E, F, G, A, B, C#, D.

E \flat D \flat G \flat

Musical staff for E \flat major scale. The key signature has three flats (B \flat , E \flat , A \flat). The scale is written in treble clef, starting on E \flat 4 and ending on E \flat 5. The notes are: E \flat , F, G, A \flat , B, C, D, E \flat , F, G, A \flat , B, C, D, E \flat .

MTSBOA High School Bass & Contrabass Clarinet Scale Sheet

concert pitch for
B \flat inst. E \flat inst.

minimum requirements, tempo quarter note = 120

E D G

A musical staff in treble clef with a key signature of three sharps (F#, C#, G#). The scale starts on E4 and ends on E5. The notes are: E, F#, G, A, B, C#, D, E, F#, G, A, B, C#, D, E, F#, G, A, B, C#, D, E, F#, G, A, B, C#, D, E.

F E \flat A \flat

A musical staff in treble clef with a key signature of one flat (B \flat). The scale starts on F4 and ends on F5. The notes are: F, G, A, B \flat , C, D, E, F, G, A, B \flat , C, D, E, F, G, A, B \flat , C, D, E, F, G, A, B \flat , C, D, E, F.

G \flat E A

A musical staff in treble clef with a key signature of one sharp (F#). The scale starts on G4 and ends on G5. The notes are: G, A, B, C, D, E, F#, G, A, B, C, D, E, F#, G, A, B, C, D, E, F#, G, A, B, C, D, E, F#, G.

G F B \flat

A musical staff in treble clef with a key signature of one sharp (F#). The scale starts on G4 and ends on G5. The notes are: G, A, B, C, D, E, F#, G, A, B, C, D, E, F#, G, A, B, C, D, E, F#, G, A, B, C, D, E, F#, G.

A \flat G \flat B

A musical staff in treble clef with a key signature of two sharps (F#, C#). The scale starts on A4 and ends on A5. The notes are: A, B, C, D, E, F#, G, A, B, C, D, E, F#, G, A, B, C, D, E, F#, G, A, B, C, D, E, F#, G.

A G C

A musical staff in treble clef with a key signature of two sharps (F#, C#). The scale starts on A4 and ends on A5. The notes are: A, B, C, D, E, F#, G, A, B, C, D, E, F#, G, A, B, C, D, E, F#, G, A, B, C, D, E, F#, G.

B \flat A \flat D \flat

A musical staff in treble clef with a key signature of two flats (B \flat , E \flat). The scale starts on B4 and ends on B5. The notes are: B, C, D, E \flat , F, G, A, B, C, D, E \flat , F, G, A, B, C, D, E \flat , F, G, A, B, C, D, E \flat , F, G.

B A D

A musical staff in treble clef with a key signature of two sharps (F#, C#). The scale starts on B4 and ends on B5. The notes are: B, C, D, E, F#, G, A, B, C, D, E, F#, G, A, B, C, D, E, F#, G, A, B, C, D, E, F#, G.

C B \flat E \flat

A musical staff in treble clef with a key signature of no sharps or flats. The scale starts on C4 and ends on C5. The notes are: C, D, E, F, G, A, B, C, D, E, F, G, A, B, C, D, E, F, G, A, B, C, D, E, F, G, A, B, C.

D \flat B E

A musical staff in treble clef with a key signature of two flats (B \flat , E \flat). The scale starts on D4 and ends on D5. The notes are: D, E, F, G, A, B, C, D, E, F, G, A, B, C, D, E, F, G, A, B, C, D, E, F, G, A, B, C, D.

D C F

A musical staff in treble clef with a key signature of two sharps (F#, C#). The scale starts on D4 and ends on D5. The notes are: D, E, F, G, A, B, C, D, E, F, G, A, B, C, D, E, F, G, A, B, C, D, E, F, G, A, B, C, D.

E \flat D \flat G \flat

A musical staff in treble clef with a key signature of one flat (B \flat). The scale starts on E4 and ends on E5. The notes are: E, F, G, A, B \flat , C, D, E, F, G, A, B \flat , C, D, E, F, G, A, B \flat , C, D, E, F, G, A, B \flat , C, D, E.

MTSBOA High School Bassoon Scale Sheet

minimum requirements, tempo quarter note = 120

B \flat



A musical staff in bass clef with a key signature of two flats (B-flat and E-flat). The scale consists of 12 quarter notes: B-flat, C, D, E-flat, F, G, A, B-flat, C, D, E-flat, F.

B



A musical staff in bass clef with a key signature of two sharps (F-sharp and C-sharp). The scale consists of 12 quarter notes: B, C, D, E, F-sharp, G, A, B, C, D, E, F-sharp.

C



A musical staff in bass clef with a key signature of no sharps or flats. The scale consists of 12 quarter notes: C, D, E, F, G, A, B, C, D, E, F, G.

D \flat



A musical staff in bass clef with a key signature of three flats (B-flat, E-flat, and A-flat). The scale consists of 12 quarter notes: D-flat, E-flat, F, G, A-flat, B-flat, C, D-flat, E-flat, F, G, A-flat.

D



A musical staff in bass clef with a key signature of two sharps (F-sharp and C-sharp). The scale consists of 12 quarter notes: D, E, F-sharp, G, A, B, C, D, E, F-sharp, G, A.

E \flat



A musical staff in bass clef with a key signature of three flats (B-flat, E-flat, and A-flat). The scale consists of 12 quarter notes: E-flat, F, G, A, B-flat, C, D, E-flat, F, G, A, B-flat.

E



A musical staff in bass clef with a key signature of three sharps (F-sharp, C-sharp, and G-sharp). The scale consists of 12 quarter notes: E, F-sharp, G-sharp, A, B, C, D, E, F-sharp, G-sharp, A, B.

F



A musical staff in bass clef with a key signature of one flat (B-flat). The scale consists of 12 quarter notes: F, G, A, B-flat, C, D, E, F, G, A, B-flat, C.

G \flat



A musical staff in bass clef with a key signature of four flats (B-flat, E-flat, A-flat, and D-flat). The scale consists of 12 quarter notes: G-flat, A-flat, B-flat, C, D-flat, E-flat, F, G-flat, A-flat, B-flat, C, D-flat.

G



A musical staff in bass clef with a key signature of one sharp (F-sharp). The scale consists of 12 quarter notes: G, A, B, C, D, E, F-sharp, G, A, B, C, D.

A \flat



A musical staff in bass clef with a key signature of four flats (B-flat, E-flat, A-flat, and D-flat). The scale consists of 12 quarter notes: A-flat, B-flat, C, D-flat, E-flat, F, G, A-flat, B-flat, C, D-flat, E-flat.

A



A musical staff in bass clef with a key signature of three sharps (F-sharp, C-sharp, and G-sharp). The scale consists of 12 quarter notes: A, B, C, D, E, F-sharp, G-sharp, A, B, C, D, E.

MTSBOA High School Saxophone Scale Sheet

concert pitch for
E \flat inst. B \flat inst.

minimum requirements, tempo quarter note = 120

B \flat D \flat A \flat

A musical staff in treble clef with a key signature of two flats (B-flat and E-flat). The scale consists of 12 notes: B-flat, C, D, E-flat, F, G, A-flat, B-flat, C, D, E-flat, F. The notes are written as quarter notes, ascending and then descending.

B D A

A musical staff in treble clef with a key signature of two sharps (F-sharp and C-sharp). The scale consists of 12 notes: B, C, D, E, F-sharp, G, A, B, C, D, E, F-sharp. The notes are written as quarter notes, ascending and then descending.

C E \flat B \flat

A musical staff in treble clef with a key signature of one flat (F-flat). The scale consists of 12 notes: C, D, E, F, G, A, B, C, D, E, F, G. The notes are written as quarter notes, ascending and then descending.

C# E B

A musical staff in treble clef with a key signature of three sharps (F-sharp, C-sharp, and G-sharp). The scale consists of 12 notes: C-sharp, D, E, F-sharp, G-sharp, A, B, C-sharp, D, E, F-sharp, G-sharp. The notes are written as quarter notes, ascending and then descending.

D F C

A musical staff in treble clef with a key signature of two sharps (F-sharp and C-sharp). The scale consists of 12 notes: D, E, F-sharp, G, A, B, C, D, E, F-sharp, G, A. The notes are written as quarter notes, ascending and then descending.

E \flat G \flat D \flat

A musical staff in treble clef with a key signature of three flats (B-flat, E-flat, and A-flat). The scale consists of 12 notes: E-flat, F, G, A, B, C, D, E-flat, F, G, A, B. The notes are written as quarter notes, ascending and then descending.

E G D

A musical staff in treble clef with a key signature of one sharp (F-sharp). The scale consists of 12 notes: E, F-sharp, G, A, B, C, D, E, F-sharp, G, A, B. The notes are written as quarter notes, ascending and then descending.

F A \flat E \flat

A musical staff in treble clef with a key signature of one flat (F-flat). The scale consists of 12 notes: F, G, A, B, C, D, E, F, G, A, B, C. The notes are written as quarter notes, ascending and then descending.

F# A E

A musical staff in treble clef with a key signature of three sharps (F-sharp, C-sharp, and G-sharp). The scale consists of 12 notes: F-sharp, G, A, B, C, D, E, F-sharp, G, A, B, C. The notes are written as quarter notes, ascending and then descending.

G B \flat F

A musical staff in treble clef with a key signature of one sharp (F-sharp). The scale consists of 12 notes: G, A, B, C, D, E, F, G, A, B, C, D. The notes are written as quarter notes, ascending and then descending.

A \flat B G \flat

A musical staff in treble clef with a key signature of three flats (B-flat, E-flat, and A-flat). The scale consists of 12 notes: A-flat, B, C, D, E, F, G, A-flat, B, C, D, E. The notes are written as quarter notes, ascending and then descending.

A C G

A musical staff in treble clef with a key signature of three sharps (F-sharp, C-sharp, and G-sharp). The scale consists of 12 notes: A, B, C, D, E, F-sharp, G, A, B, C, D, E. The notes are written as quarter notes, ascending and then descending.

MTSBOA High School Baritone Saxophone Scale Sheet

minimum requirements, tempo quarter note = 120

B \flat (D \flat concert)



B (D concert)



C (E \flat concert)



C# (E concert)



D (F concert)



E \flat (G \flat concert)



E (G concert)



F (A \flat concert)



F# (A concert)



G (B \flat concert)



A \flat (B concert)



A (C concert)



MTSBOA High School Trumpet Scale Sheet

minimum requirements, tempo quarter note = 120

G (F concert)



A \flat (G \flat concert)



A (G concert)



B \flat (A \flat concert)



B (A concert)



C (B \flat concert)



D \flat (B concert)



D (C concert)



E \flat (D \flat concert)



E (D concert)



F (E \flat concert)



F \sharp (E concert)



MTSBOA High School Horn Scale Sheet

minimum requirements, tempo quarter note = 120

G (C concert)



A \flat (D \flat concert)



A (D concert)



B \flat (E \flat concert)



B (E concert)



C (F concert)



D \flat (G \flat concert)



D (G concert)



E \flat (A \flat concert)



E (A concert)



F (B \flat concert)



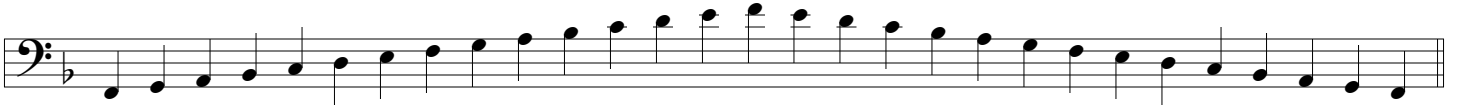
G \flat (B concert)



MTSBOA High School Trombone & Euphonium Scale Sheet

minimum requirements, tempo quarter note = 120

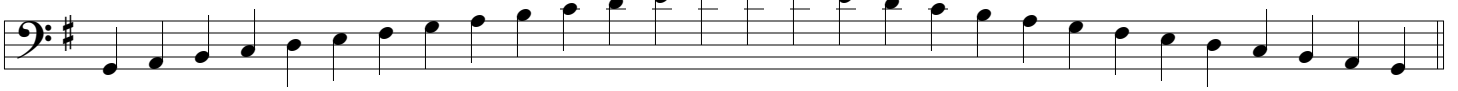
F



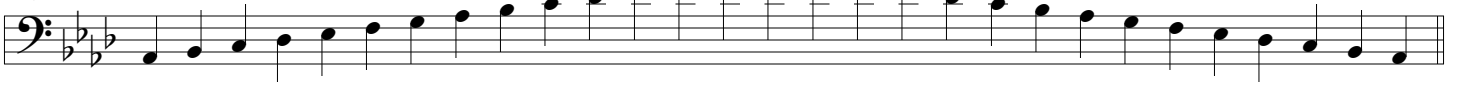
Gb



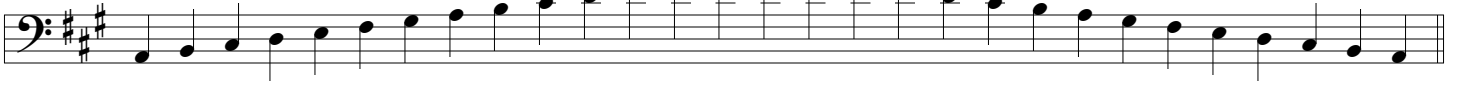
G



Ab



A



Bb



B



C



Db



D



Eb



E



MTSBOA High School Tuba Scale Sheet

minimum requirements, tempo quarter note = 120

F



Gb



G



Ab



A



Bb



B



C



Db



D



Eb



E



MTSBOA High School Mallet Scale Sheet

minimum requirements, tempo quarter note = 120

G



A \flat



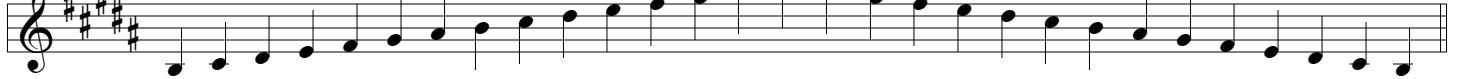
A



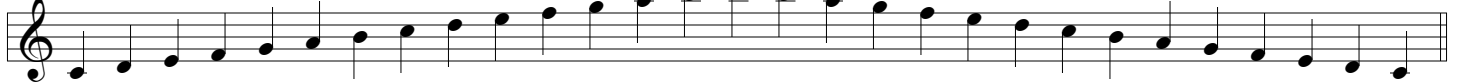
B \flat



B



C



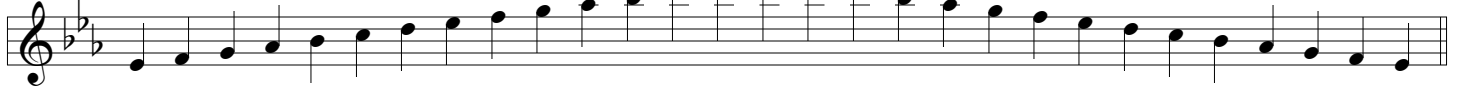
D \flat



D



E \flat



E



F



G \flat



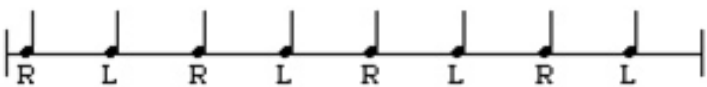
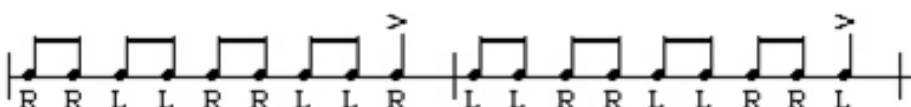
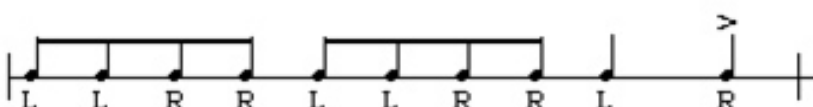

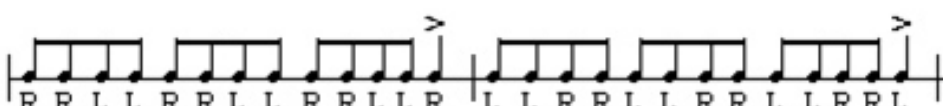
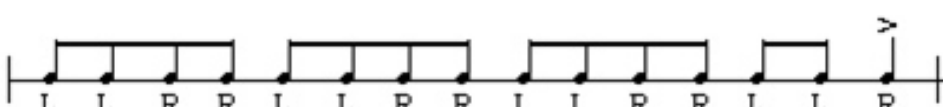
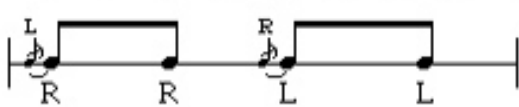

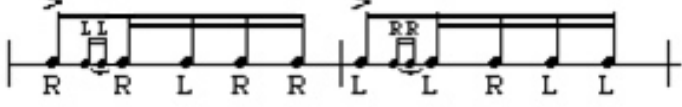
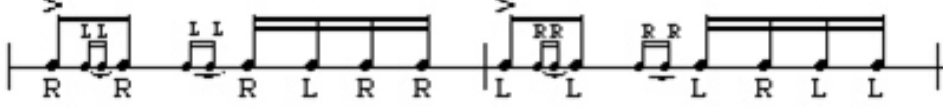

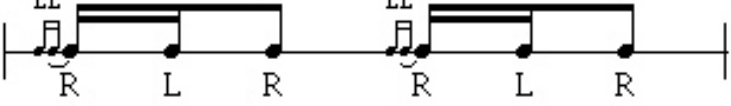
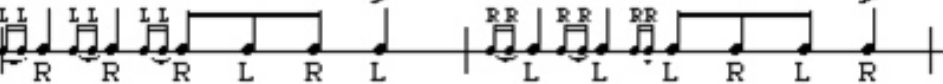
MTSBOA 9/10 Snare Drum Rudiments ~ marked (*) are 7-8 Requirements

(play rudiments slow to fast to slow)

*Orchestral Buzz Roll ($p < f > p$)

*1.	Long Roll	
*2.	5 Stroke Roll	
*3.	7 Stroke Roll	
*4.	Flam	
*5.	Ruff	
6.	Flam Paradiddle	
7.	Flamacue	
*8.	Flam Accent	
*9.	Single Drag	
10.	Double Drag	
*11.	Double Paradiddle	
*12.	Single Ratamacue	
13.	Double Ratamacue	

MTSBOA Snare Drum Rudiment Requirements p. 2

- 14. Single Stroke Roll 
- *15. 9 Stroke Roll 
- 16. 10 Stroke Roll 
- 17. 11 Stroke Roll 
- 18. 13 Stroke Roll 
- 19. 15 Stroke Roll 
- *20. Flam Tap 
- *21. Single Paradiddle 
- *22. Drag Paradiddle No. 1 
- 23. Drag Paradiddle No. 2 
- 24. Flam Paradiddle Diddle 
- 25. Lesson 25 
- 26. Triple Ratamacue 

PERCUSSIVE ARTS SOCIETY INTERNATIONAL DRUM RUDIMENTS

ALL RUDIMENTS SHOULD BE PRACTICED: OPEN (SLOW) TO CLOSE (FAST) TO OPEN (SLOW) AND/OR AT AN EVEN MODERATE MARCH TEMPO.

I. ROLL RUDIMENTS

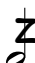
A. SINGLE STROKE ROLL RUDIMENTS


1. SINGLE STROKE ROLL * 
R L R L R L R L

2. SINGLE STROKE FOUR 
R L R L R L R L
L R L R L R L R


3. SINGLE STROKE SEVEN 
R L R L R L R
L R L R L R L


B. MULTIPLE BOUNCE ROLL RUDIMENTS


4. MULTIPLE BOUNCE ROLL 


5. TRIPLE STROKE ROLL 
R R R L L L R R R L L L

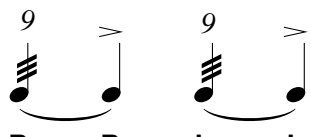
C. DOUBLE STROKE OPEN ROLL RUDIMENTS

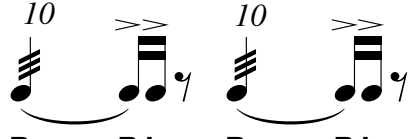
6. DOUBLE STROKE OPEN ROLL * 
R R L L R R L L


7. FIVE STROKE ROLL * 
R R L L L R R

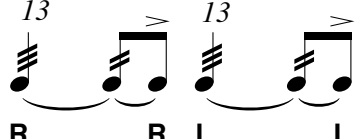
8. SIX STROKE ROLL 
R L L R L R R L

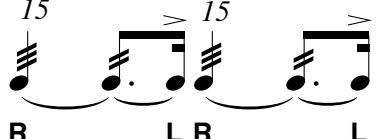
9. SEVEN STROKE ROLL * 
R L R L L R R L

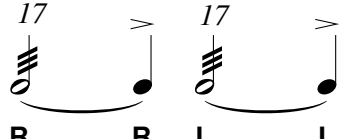
10. NINE STROKE ROLL * 
R R L L L R R

11. TEN STROKE ROLL * 
R L R L R L R L
L R L R L R L R


12. ELEVEN STROKE ROLL * 
R L R L R L R L
L R L R L R L R


13. THIRTEEN STROKE ROLL * 
R R L L L R R


14. FIFTEEN STROKE ROLL * 
R L L R L R L R
R L L R L R L R


15. SEVENTEEN STROKE ROLL 
R R L L L R R

II. DIDDLE RUDIMENTS


16. SINGLE PARADIDDLE * 
R L R R L L R L


17. DOUBLE PARADIDDLE * 
R L R R L L R L

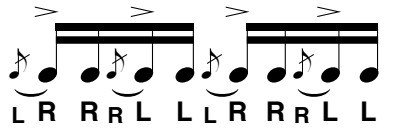
18. TRIPLE PARADIDDLE 
R L R R L L R L

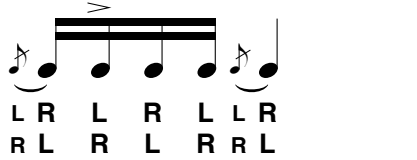
19. SINGLE PARADIDDLE-DIDDLE 
R L R R L L R L
L L R L R L R L


III. FLAM RUDIMENTS


20. FLAM * 
LR RL


21. FLAM ACCENT * 
LR L R RL R L


22. FLAM TAP * 
LR RRL LLR RRL L

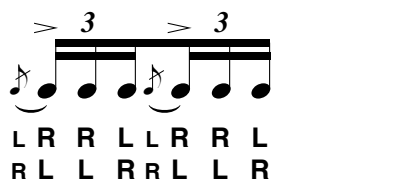
23. FLAMACUE * 
LR L R LLR
RL R L RRL

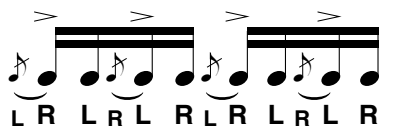
24. FLAM PARADIDDLE * 
LR L R RRL R L L


25. SINGLE FLAMMED MILL 
LR R L RRL L R L

26. FLAM PARADIDDLE-DIDDLE * 
LR L RRL LRL R L LRR

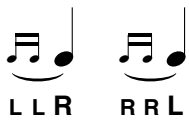
27. PATAFLAFLA 
LR L RRL LR L RRL


28. SWISS ARMY TRIPLET 
LR R LLR RL
RL L RRL L R


29. INVERTED FLAM TAP 
LR LRL RLR LRL R

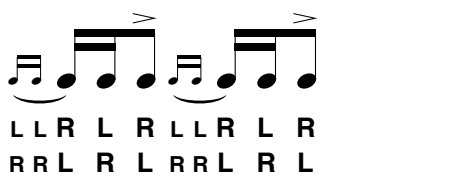
30. FLAM DRAG 
LR L L RRL R R L


IV. DRAG RUDIMENTS


31. DRAG * 
LLR RRL


32. SINGLE DRAG TAP * 
LLR LRRL R

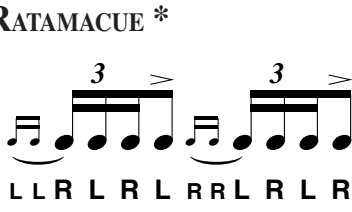
33. DOUBLE DRAG TAP * 
LLR LLR LRRL RRL R

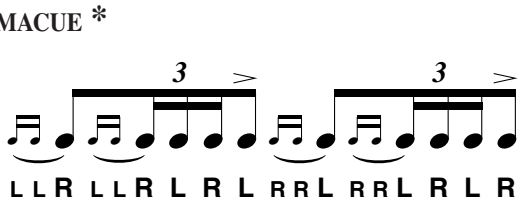
34. LESSON 25 * 
LLR L R LLR L R
RRL R L RRL R L

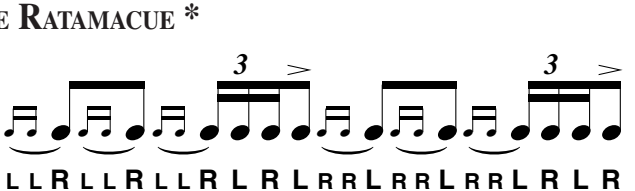
35. SINGLE DRAGADIDDLE 
RRL R RLL R L L

36. DRAG PARADIDDLE #1 * 
R LLR L R R L RRL R L L

37. DRAG PARADIDDLE #2 * 
R LLR LLR L R R L RRL RRL R L L

38. SINGLE RATAMACUE * 
LLR L R L RRL R L R

39. DOUBLE RATAMACUE * 
LLR LLR L R L RRL RRL R L R

40. TRIPLE RATAMACUE * 
LLR LLR LLR L R L RRL RRL R L R