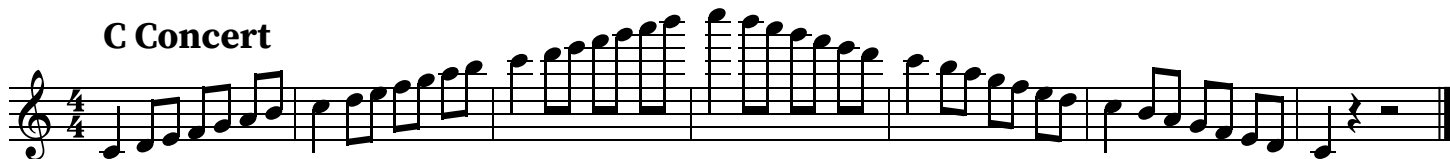


MTSBOA 11/12 Grade Flute Scales

2025

Minimum required tempo 100 bpm

C Concert



D \flat Concert



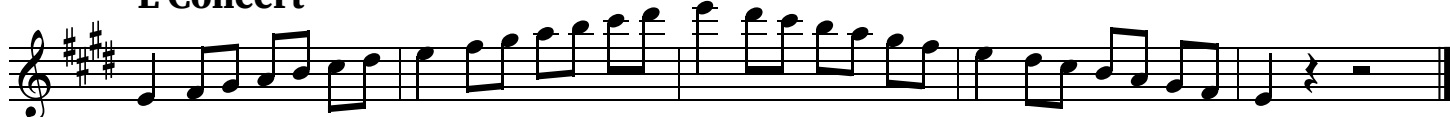
D Concert



E \flat Concert



E Concert



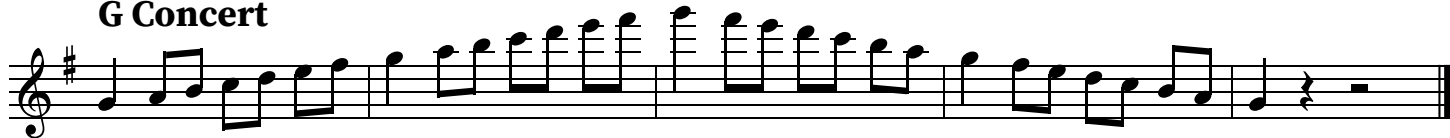
F Concert

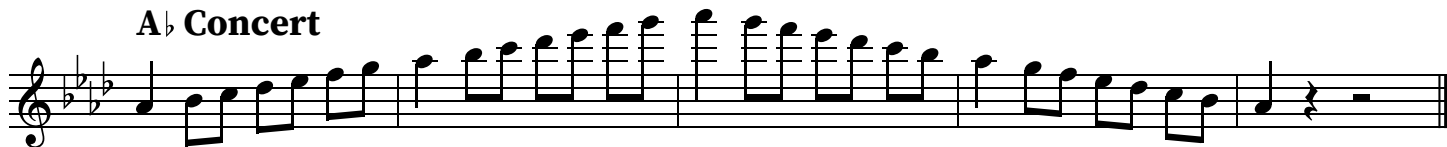
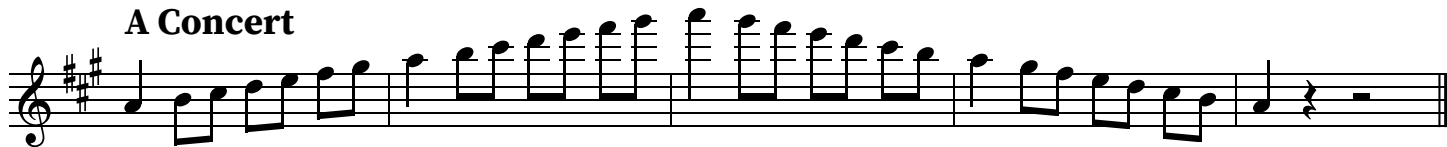
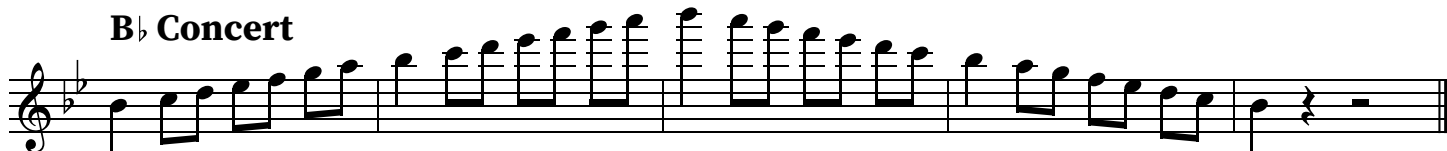
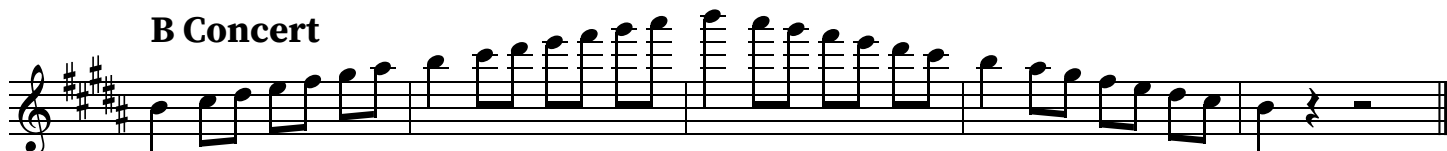
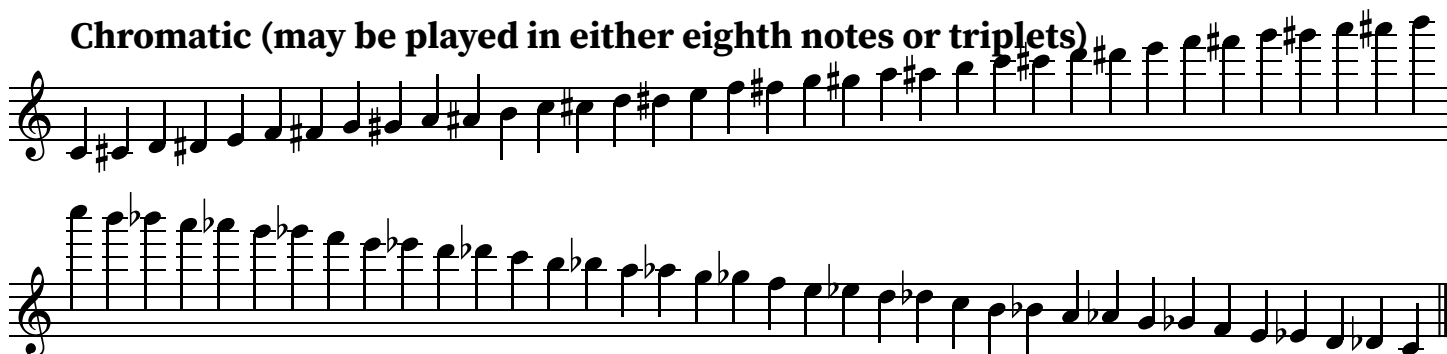


G \flat Concert



G Concert



A \flat Concert**A Concert****B \flat Concert****B Concert****Chromatic (may be played in either eighth notes or triplets)**

STUDENTS MUST USE ONE OF THE RHYTHMIC CHOICES BELOW



Major scales must be played with the prescribed rhythm pattern indicated on the

MTSBOA approved scale sheets.

MTSBOA 11/12 Grade Oboe Scales

2025

Minimum required tempo 100 bpm

C Concert



D \flat Concert



D Concert



E \flat Concert



E Concert



F Concert

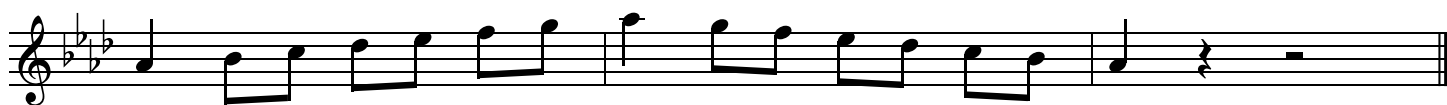


G \flat Concert



G Concert



A \flat Concert**A Concert****B \flat Concert****B Concert****Chromatic (may be played in either eighth notes or triplets)**

STUDENTS MUST USE ONE OF THE RHYTHMIC CHOICES BELOW



Major scales must be played with the prescribed rhythm pattern indicated on the

MTSBOA 11/12 Grade Bassoon Scales

2025

Minimum required tempo 100 bpm

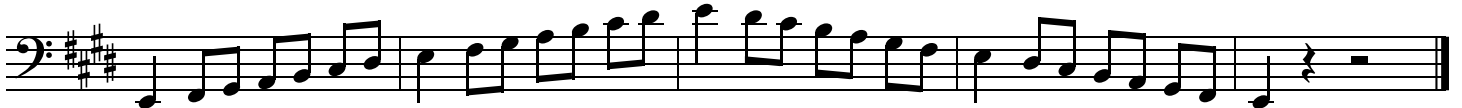
D Concert



E \flat Concert



E Concert



F Concert



G \flat Concert



G Concert

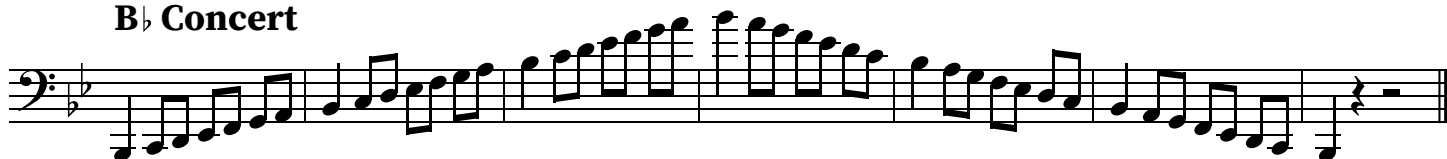


A \flat Concert



A Concert



B \flat Concert**B Concert****C Concert****D \flat Concert****Chromatic (may be played in either eighth notes or triplets)**

STUDENTS MUST USE ONE OF THE RHYTHMIC CHOICES BELOW



Major scales must be played with the prescribed rhythm pattern indicated on the

MTSBOA approved scale sheets.

MTSBOA 11/12 Grade Clarinet Scales

2025

Minimum required tempo 100 bpm

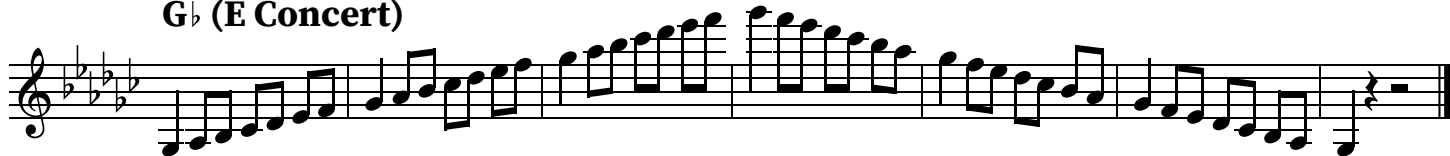
E (D Concert)



F (Eb Concert)



Gb (E Concert)



G (F Concert)



Ab (Gb Concert)



A (G Concert)

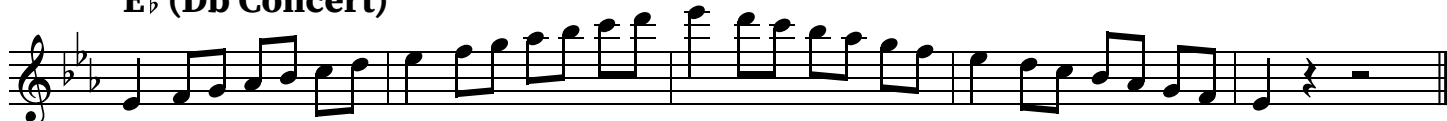


Bb (Ab Concert)



B (A Concert)



C (Bb Concert)**D \flat (B Concert)****D (C Concert)****E \flat (Db Concert)****Chromatic (may be played in either eighth notes or triplets)**

STUDENTS MUST USE ONE OF THE RHYTHMIC CHOICES BELOW



Major scales must be played with the prescribed rhythm pattern indicated on the

MTSBOA 11/12 Grade Bass Clarinet Scales

2025

Minimum required tempo 100 bpm

E (D Concert)



F (Eb Concert)



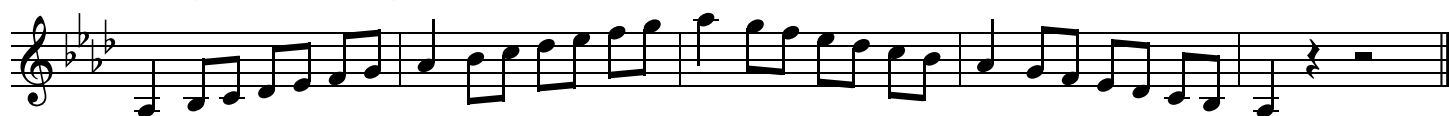
Gb (E Concert)



G (F Concert)



Ab (Gb Concert)



A (G Concert)



Bb (Ab Concert)



B (A Concert)



C (Bb Concert)**D \flat (B Concert)****D (C Concert)****E \flat (Db Concert)****Chromatic (may be played in either eighth notes or triplets)**

STUDENTS MUST USE ONE OF THE RHYTHMIC CHOICES BELOW



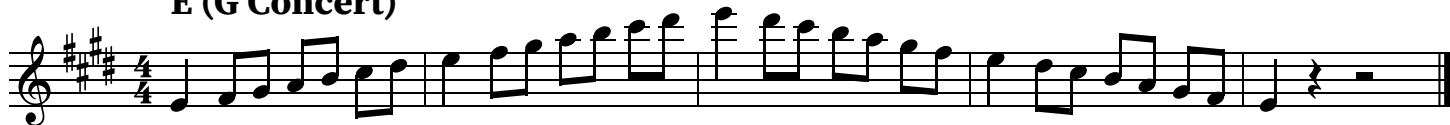
Major scales must be played with the prescribed rhythm pattern indicated on the

MTSBOA 11/12 Grade Alto Saxophone Scales

2025

Minimum required tempo 100 bpm

E (G Concert)



F (Ab Concert)



F# (A Concert)



G (Bb Concert)



Ab (B Concert)



A (C Concert)

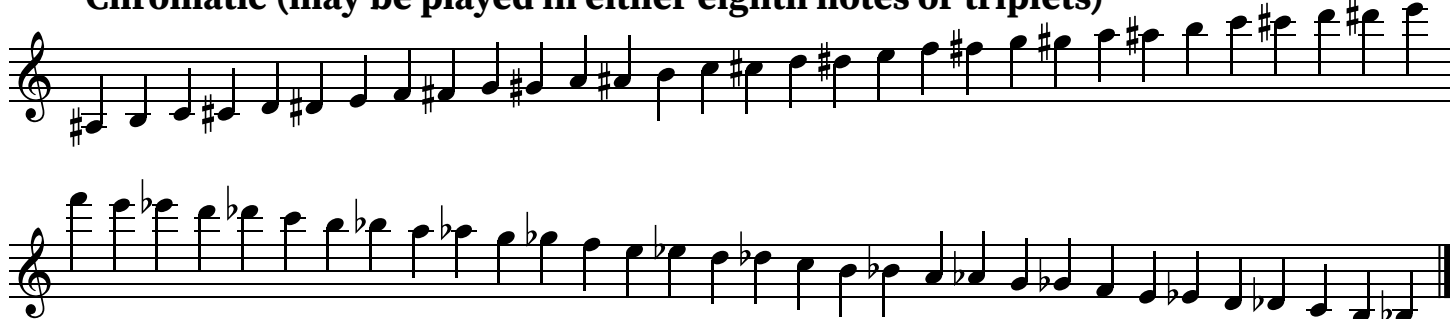


Bb (Db Concert)



B (D Concert)



C (Eb Concert)**D \flat (E Concert)****D (F Concert)****E \flat (Gb Concert)****Chromatic (may be played in either eighth notes or triplets)**

STUDENTS MUST USE ONE OF THE RHYTHMIC CHOICES BELOW



Major scales must be played with the prescribed rhythm pattern indicated on the

MTSBOA 11/12 Grade Tenor Saxophone Scales 2025

Minimum required tempo 100 bpm

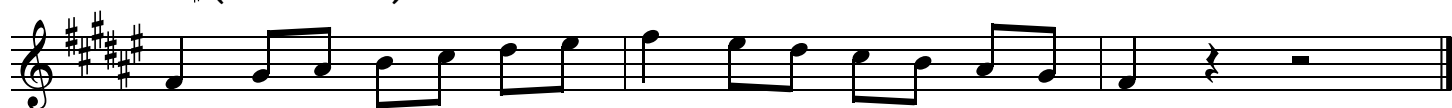
E (D Concert)



F (Eb Concert)



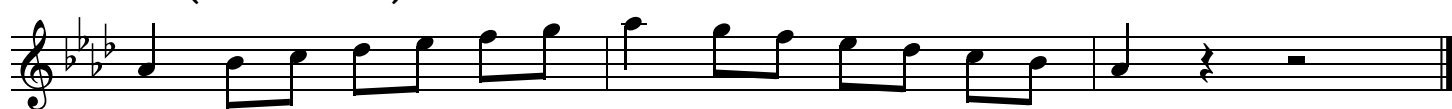
F# (E Concert)



G (F Concert)



Ab (Gb Concert)



A (G Concert)

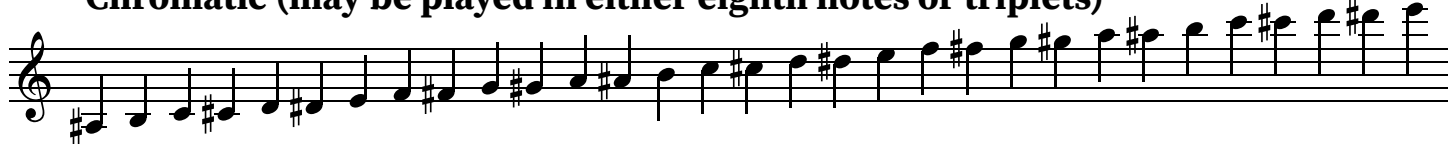


Bb (Ab Concert)



B (A Concert)



C (Bb Concert)**D \flat (B Concert)****D (C Concert)****E \flat (Db Concert)****Chromatic (may be played in either eighth notes or triplets)**

STUDENTS MUST USE ONE OF THE RHYTHMIC CHOICES BELOW



Major scales must be played with the prescribed rhythm pattern indicated on the

MTSBOA 11/12 Grade Bari Saxophone Scales

2025

Minimum required tempo 100 bpm

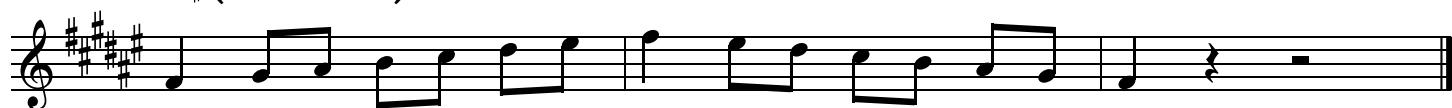
E (G Concert)



F (Ab Concert)



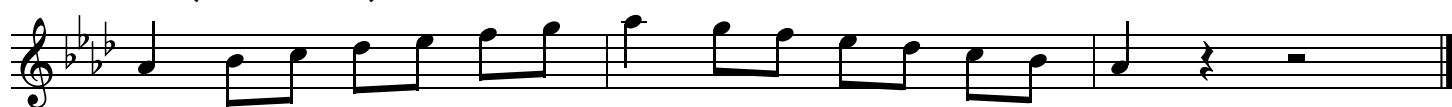
F# (A Concert)



G (Bb Concert)



Ab (B Concert)



A (C Concert)

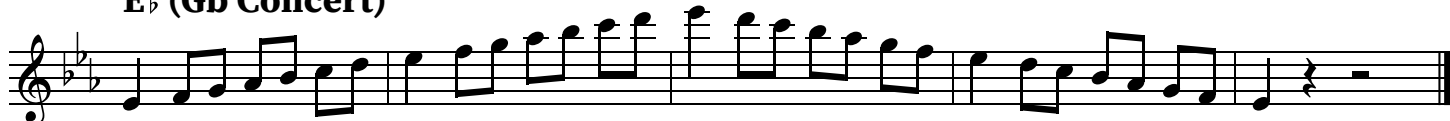


Bb (Db Concert)



B (D Concert)



C (Eb Concert)**D \flat (E Concert)****D (F Concert)****E \flat (Gb Concert)****Chromatic (may be played in either eighth notes or triplets)**

STUDENTS MUST USE ONE OF THE RHYTHMIC CHOICES BELOW



Major scales must be played with the prescribed rhythm pattern indicated on the

MTSBOA 11/12 Grade Trumpet Scales 2025

Minimum required tempo 100 bpm

D (C Concert)



E♭ (Db Concert)



E (D Concert)



F (Eb Concert)



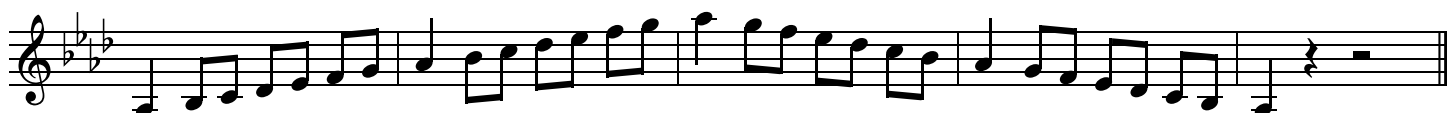
F# (E Concert)



G (F Concert)



A♭ (Gb Concert)



A (G Concert)



B \flat (Ab Concert)**B (A Concert)****C (Bb Concert)****D \flat (B Concert)****Chromatic (may be played in either eighth notes or triplets)**

STUDENTS MUST USE ONE OF THE RHYTHMIC CHOICES BELOW



Major scales must be played with the prescribed rhythm pattern indicated on the

MTSBOA 11/12 Grade Horn Scales

2025

Minimum required tempo 100 bpm

E (A Concert)



F (Bb Concert)



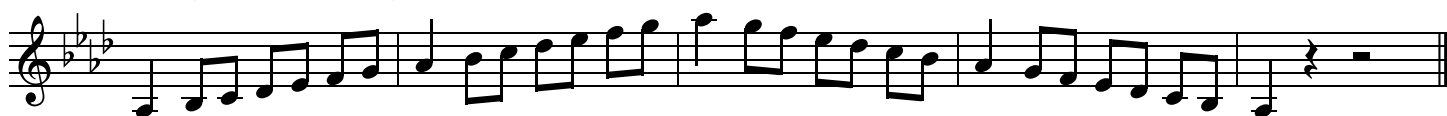
Gb (B Concert)



G (C Concert)



Ab (Db Concert)



A (D Concert)



Bb (Eb Concert)



B (E Concert)



C (F Concert)**D \flat (Gb Concert)****D (G Concert)****E \flat (Ab Concert)****Chromatic (may be played in either eighth notes or triplets)**

STUDENTS MUST USE ONE OF THE RHYTHMIC CHOICES BELOW



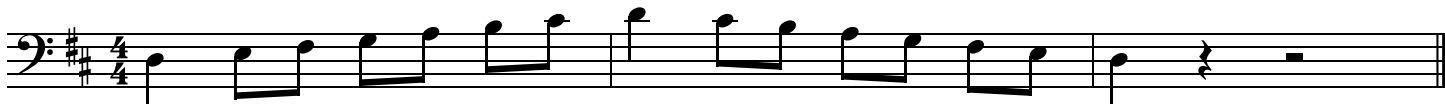
Major scales must be played with the prescribed rhythm pattern indicated on the

MTSBOA approved scale sheets.

MTSBOA 11/12 Grade Trombone/Euphonium Scales 2025

Minimum required tempo

D Concert



E \flat Concert



E Concert



F Concert



G \flat Concert



G Concert

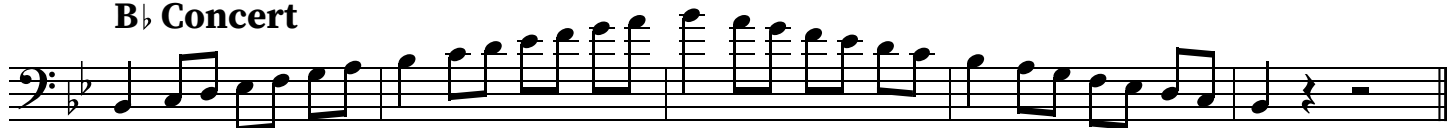


A \flat Concert

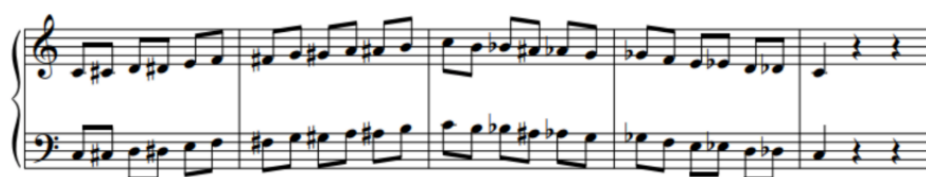


A Concert



B \flat Concert**B Concert****C Concert****D \flat Concert****Chromatic (may be played in either eighth notes or triplets)**

STUDENTS MUST USE ONE OF THE RHYTHMIC CHOICES BELOW



Major scales must be played with the prescribed rhythm pattern indicated on the

MTSBOA approved scale sheets.

MTSBOA 11/12 Grade Baritone Treble Clef Scales 2025

Minimum required tempo 100 bpm

D (C Concert)



E♭ (Db Concert)



E (D Concert)



F (Eb Concert)



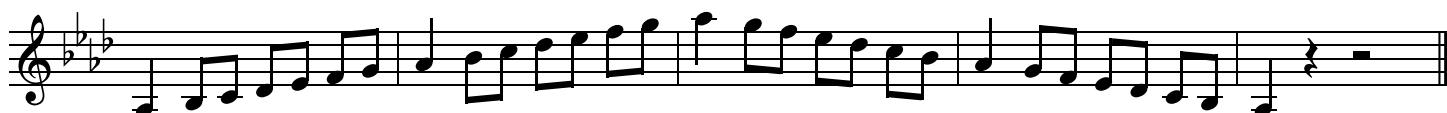
F# (E Concert)



G (F Concert)



A♭ (Gb Concert)



A (G Concert)



B \flat (Ab Concert)**B (A Concert)****C (Bb Concert)****D \flat (B Concert)****Chromatic (may be played in either eighth notes or triplets)**

STUDENTS MUST USE ONE OF THE RHYTHMIC CHOICES BELOW



Major scales must be played with the prescribed rhythm pattern indicated on the

MTSBOA approved scale sheets.

MTSBOA 11/12 Grade Tuba Scales

2025

Minimum required tempo 100 bpm

D Concert



E \flat Concert



E Concert



F Concert



G \flat Concert



G Concert



A \flat Concert



A Concert



B \flat Concert**B Concert****C Concert****D \flat Concert****Chromatic (may be played in either eighth notes or triplets)**

STUDENTS MUST USE ONE OF THE RHYTHMIC CHOICES BELOW



Major scales must be played with the prescribed rhythm pattern indicated on the

MTSBOA 11/12 Grade Mallet Scales

2025

Minimum required tempo 100 bpm

C Concert



D \flat Concert



D Concert



E \flat Concert



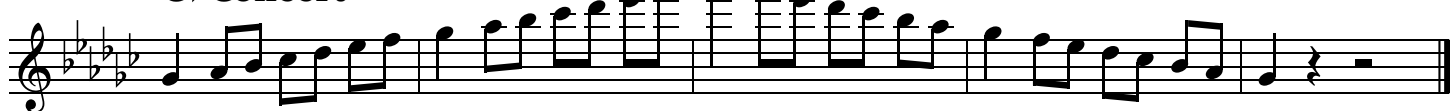
E Concert



F Concert



G \flat Concert



G Concert



A \flat Concert**A Concert****B \flat Concert****B Concert****Chromatic (may be played in either eighth notes or triplets)**

STUDENTS MUST USE ONE OF THE RHYTHMIC CHOICES BELOW



Major scales must be played with the prescribed rhythm pattern indicated on the

MTSBOA 11-12 Percussion Rudiments

All rudiments should be performed open (slow) to close (fast) to open
 Required rudiments are marked with ★

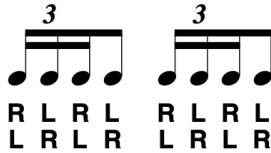
I. ROLL RUDIMENTS

A. SINGLE STROKE ROLL RUDIMENTS

★ 1. SINGLE STROKE ROLL *



★ 2. SINGLE STROKE FOUR



3. SINGLE STROKE SEVEN



B. MULTIPLE BOUNCE ROLL RUDIMENTS

★ 4. MULTIPLE BOUNCE ROLL



5. TRIPLE STROKE ROLL



C. DOUBLE STROKE OPEN ROLL RUDIMENTS

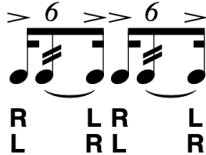
★ 6. DOUBLE STROKE OPEN ROLL *



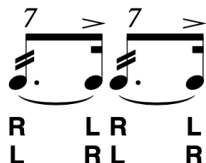
★ 7. FIVE STROKE ROLL *



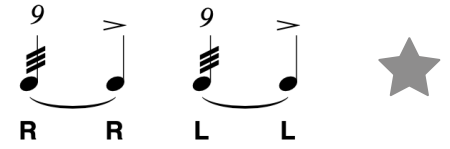
★ 8. SIX STROKE ROLL



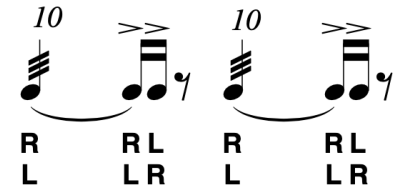
★ 9. SEVEN STROKE ROLL *



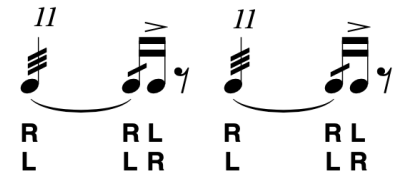
10. NINE STROKE ROLL *



11. TEN STROKE ROLL *



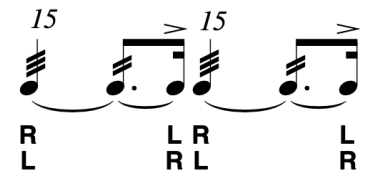
12. ELEVEN STROKE ROLL *



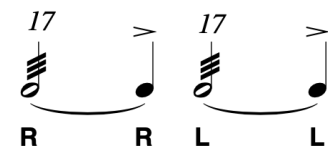
13. THIRTEEN STROKE ROLL *



14. FIFTEEN STROKE ROLL *



15. SEVENTEEN STROKE ROLL



II. DIDDLE RUDIMENTS

16. SINGLE PARADIDDLE *



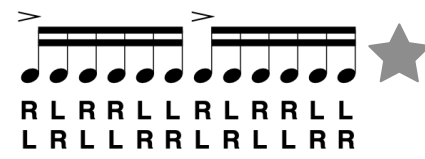
17. DOUBLE PARADIDDLE *



18. TRIPLE PARADIDDLE



19. SINGLE PARADIDDLE-DIDDLE





MTSBOA 11-12 Percussion Rudiments


All rudiments should be performed open (slow) to close (fast) to open

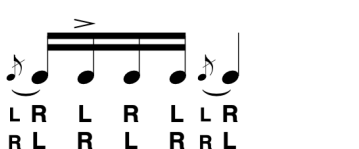
Required rudiments are marked with ★


III. FLAM RUDIMENTS


★ 20. FLAM *  LR RL


★ 21. FLAM ACCENT *  LR L R RL R L


★ 22. FLAM TAP *  LR RRL LLR RRL L

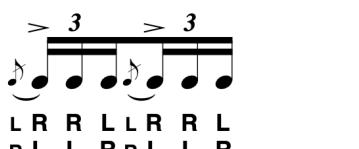
★ 23. FLAMACUE *  LR L R LLR
RL R L RRL


★ 24. FLAM PARADIDDLE *  LR L R RRL R L L


25. SINGLE FLAMMED MILL  LR R L RRL L R L

26. FLAM PARADIDDLE-DIDDLE *  LR L RRL L R L R L R R


★ 27. PATAFLAFLA  LR L RRL LR L RRL


★ 28. SWISS ARMY TRIPLET  LR R LLR RL L RRL
RL L RRL L R


★ 29. INVERTED FLAM TAP  LR L RL RL R L RL R

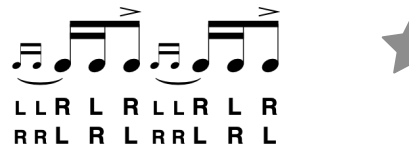
★ 30. FLAM DRAG  LR L L RRL R R L


IV. DRAG RUDIMENTS


31. DRAG *  LLR RRL ★


32. SINGLE DRAG TAP *  LLR L RRL R ★

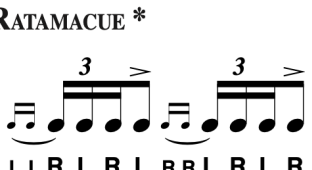
33. DOUBLE DRAG TAP *  LLR LLR L RRL RRL R


34. LESSON 25 *  LLR L R LLR L R
RRL R L RRL R L


35. SINGLE DRAGADIDDLE  RRL R R LLR L L

36. DRAG PARADIDDLE #1 *  R LLR L R R L RRL R L L ★

37. DRAG PARADIDDLE #2 *  R LLR LLR L R R L RRL RRL R L L

38. SINGLE RATAMACUE *  LLR L R L RRL R L R ★

39. DOUBLE RATAMACUE *  LLR LLR L R L RRL RRL R L R

40. TRIPLE RATAMACUE *  LLR LLR LLR L R L RRL RRL R L R