

MTSBOA 9/10 Grade Flute Scales

2025

Minimum required tempo 100 bpm

C Concert



D \flat Concert



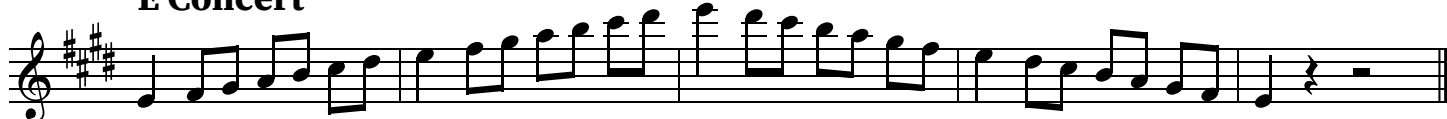
D Concert



E \flat Concert



E Concert



F Concert

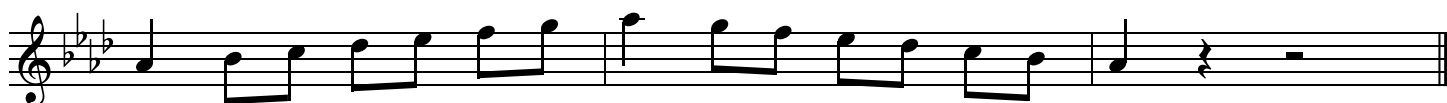
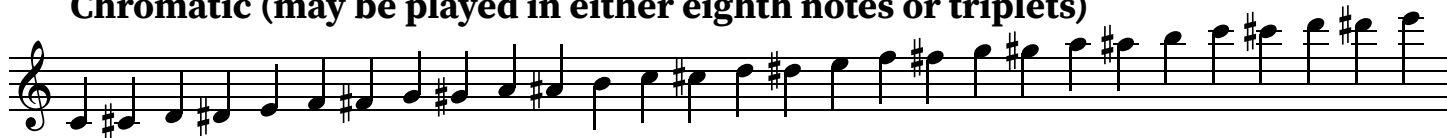


G \flat Concert



G Concert



A \flat Concert**A Concert****B \flat Concert****B Concert****Chromatic (may be played in either eighth notes or triplets)**

STUDENTS MUST USE ONE OF THE RHYTHMIC CHOICES BELOW



Major scales must be played with the prescribed rhythm pattern indicated on the

MTSBOA approved scale sheets.

MTSBOA 9/10 Grade Oboe Scales

2025

Minimum required tempo 100 bpm

C Concert



D \flat Concert



D Concert



E \flat Concert



E Concert



F Concert

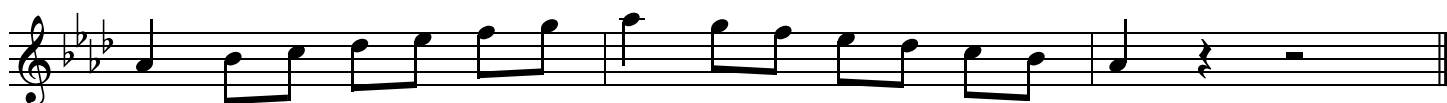


G \flat Concert



G Concert



A \flat Concert**A Concert****B \flat Concert****B Concert****Chromatic (may be played in either eighth notes or triplets)**

STUDENTS MUST USE ONE OF THE RHYTHMIC CHOICES BELOW



Major scales must be played with the prescribed rhythm pattern indicated on the

MTSBOA approved scale sheets.

MTSBOA 9/10 Grade Bassoon Scales

2025

Minimum required tempo 100 bpm

D Concert



E♭ Concert



E Concert



F Concert



G♭ Concert



G Concert



A♭ Concert



A Concert



B \flat Concert**B Concert****C Concert****D \flat Concert****Chromatic (may be played in either eighth notes or triplets)**

STUDENTS MUST USE ONE OF THE RHYTHMIC CHOICES BELOW



Major scales must be played with the prescribed rhythm pattern indicated on the

MTSBOA approved scale sheets.

MTSBOA 9/10 Grade Clarinet Scales

2025

Minimum required tempo 100 bpm

E (D Concert)



F (Eb Concert)



Gb (E Concert)



G (F Concert)



Ab (Gb Concert)



A (G Concert)



Bb (Ab Concert)



B (A Concert)



C (Bb Concert)**D \flat (B Concert)****D (C Concert)****E \flat (Db Concert)****Chromatic (may be played in either eighth notes or triplets)**

STUDENTS MUST USE ONE OF THE RHYTHMIC CHOICES BELOW



Major scales must be played with the prescribed rhythm pattern indicated on the

MTSBOA approved scale sheets.

MTSBOA 9/10 Grade Bass Clarinet Scales

2025

Minimum required tempo 100 bpm

E (D Concert)



F (Eb Concert)



Gb (E Concert)



G (F Concert)



Ab (Gb Concert)



A (G Concert)



Bb (Ab Concert)



B (A Concert)



C (Bb Concert)**D \flat (B Concert)****D (C Concert)****E \flat (Db Concert)****Chromatic (may be played in either eighth notes or triplets)**

STUDENTS MUST USE ONE OF THE RHYTHMIC CHOICES BELOW



Major scales must be played with the prescribed rhythm pattern indicated on the

MTSBOA approved scale sheets.

MTSBOA 9/10 Grade Alto Saxophone Scales

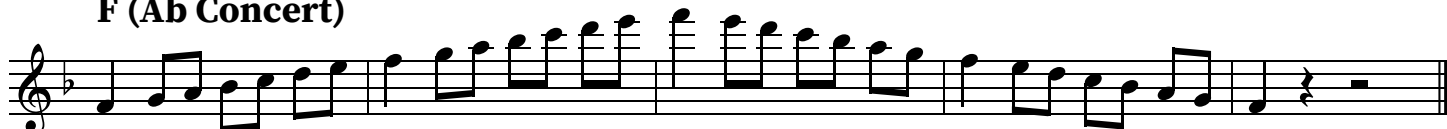
2025

Minimum required tempo : 100 bpm

E (G Concert)



F (Ab Concert)



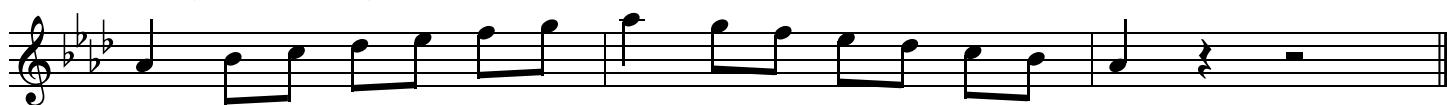
F# (A Concert)



G (Bb Concert)



Ab (B Concert)



A (C Concert)

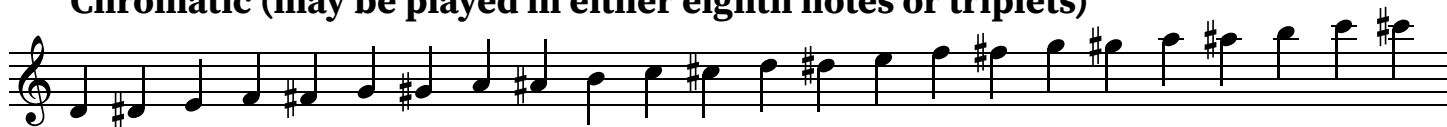


Bb (Db Concert)



B (D Concert)



C (Eb Concert)**D \flat (E Concert)****D (F Concert)****E \flat (Gb Concert)****Chromatic (may be played in either eighth notes or triplets)**

STUDENTS MUST USE ONE OF THE RHYTHMIC CHOICES BELOW



Major scales must be played with the prescribed rhythm pattern indicated on the

MTSBOA approved scale sheets.

MTSBOA 9/10 Grade Tenor Saxophone Scales

2025

Minimum required tempo 100 bpm

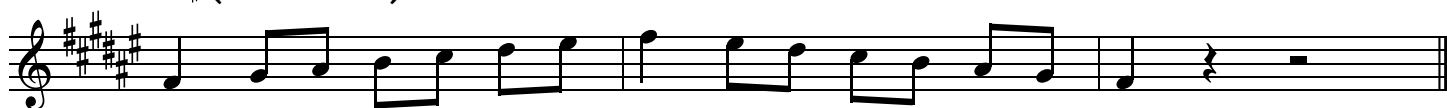
E (D Concert)



F (Eb Concert)



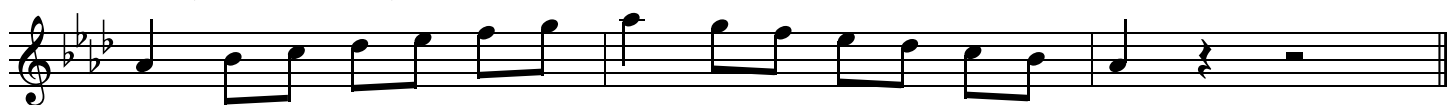
F# (E Concert)



G (F Concert)



Ab (Gb Concert)



A (G Concert)



Bb (Ab Concert)



B (A Concert)



C (Bb Concert)**D \flat (B Concert)****D (C Concert)****E \flat (Db Concert)****Chromatic (may be played in either eighth notes or triplets)**

STUDENTS MUST USE ONE OF THE RHYTHMIC CHOICES BELOW



Major scales must be played with the prescribed rhythm pattern indicated on the

MTSBOA approved scale sheets.

MTSBOA 9/10 Grade Bari Saxophone Scales

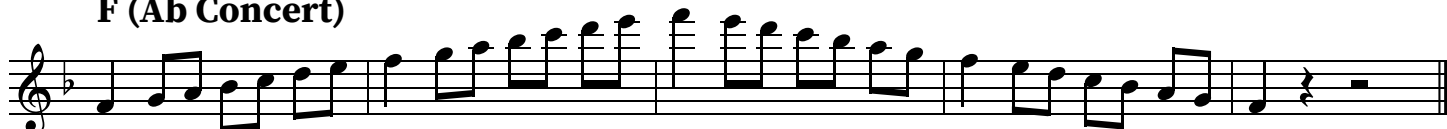
2025

Minimum required tempo 100 bpm

E (G Concert)



F (Ab Concert)



F# (A Concert)



G (Bb Concert)



Ab (B Concert)



A (C Concert)

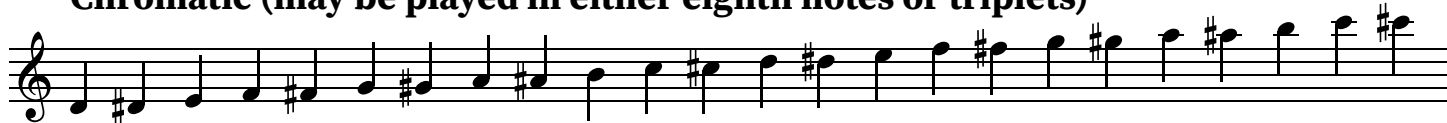


Bb (Db Concert)



B (D Concert)



C (Eb Concert)**D \flat (E Concert)****D (F Concert)****E \flat (Gb Concert)****Chromatic (may be played in either eighth notes or triplets)**

STUDENTS MUST USE ONE OF THE RHYTHMIC CHOICES BELOW



Major scales must be played with the prescribed rhythm pattern indicated on the

MTSBOA approved scale sheets.

MTSBOA 9/10 Grade Trumpet Scales

2025

Minimum required tempo 100 bpm

E (D Concert)



F (Eb Concert)



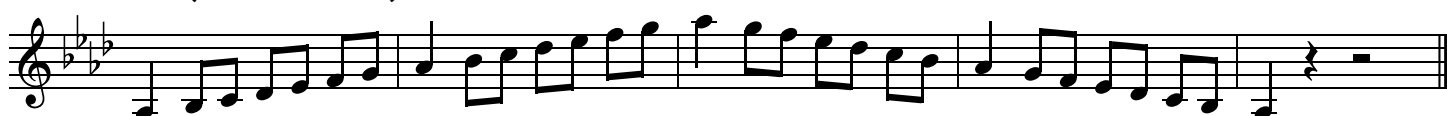
F# (E Concert)



G (F Concert)



Ab (Gb Concert)



A (G Concert)



Bb (Ab Concert)



B (A Concert)



C (Bb Concert)**D \flat (B Concert)****D (C Concert)****E \flat (Db Concert)****Chromatic (may be played in either eighth notes or triplets)**

STUDENTS MUST USE ONE OF THE RHYTHMIC CHOICES BELOW



Major scales must be played with the prescribed rhythm pattern indicated on the

MTSBOA approved scale sheets.

MTSBOA 9/10 Grade Horn Scales 2025

Minimum required tempo 100 bpm

E (A Concert)



F (Bb Concert)



Gb (B Concert)



G (C Concert)



Ab (Db Concert)



A (D Concert)



Bb (Eb Concert)



B (E Concert)



C (F Concert)**D \flat (Gb Concert)****D (G Concert)****E \flat (Ab Concert)****Chromatic (may be played in either eighth notes or triplets)**

STUDENTS MUST USE ONE OF THE RHYTHMIC CHOICES BELOW



Major scales must be played with the prescribed rhythm pattern indicated on the

MTSBOA approved scale sheets.

MTSBOA 9/10 Grade Trombone/Euphonium Scales

2025

Minimum required tempo 100 bpm

D Concert



E♭ Concert



E Concert



F Concert



G♭ Concert



G Concert



A♭ Concert



A Concert



B \flat Concert**B Concert****C Concert****D \flat Concert****Chromatic (may be played in either eighth notes or triplets)**

STUDENTS MUST USE ONE OF THE RHYTHMIC CHOICES BELOW



Major scales must be played with the prescribed rhythm pattern indicated on the

MTSBOA approved scale sheets.

MTSBOA 9/10 Grade Baritone Treble Clef Scales

2025

Minimum required tempo 100 bpm

E (D Concert)



F (Eb Concert)



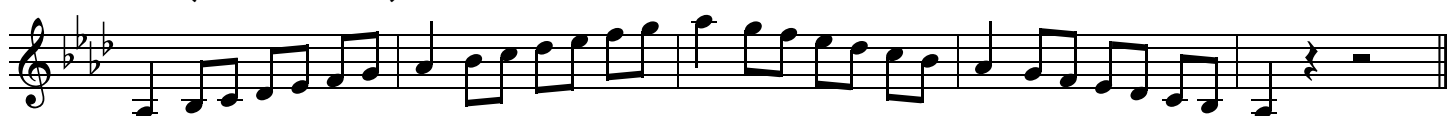
F# (E Concert)



G (F Concert)



Ab (Gb Concert)



A (G Concert)



Bb (Ab Concert)



B (A Concert)



C (Bb Concert)**D \flat (B Concert)****D (C Concert)****E \flat (Db Concert)****Chromatic (may be played in either eighth notes or triplets)**

STUDENTS MUST USE ONE OF THE RHYTHMIC CHOICES BELOW



Major scales must be played with the prescribed rhythm pattern indicated on the

MTSBOA approved scale sheets.

MTSBOA 9/10 Grade Tuba Scales

2025

Minimum required tempo 100 bpm

D Concert



E \flat Concert



E Concert



F Concert



G \flat Concert



G Concert

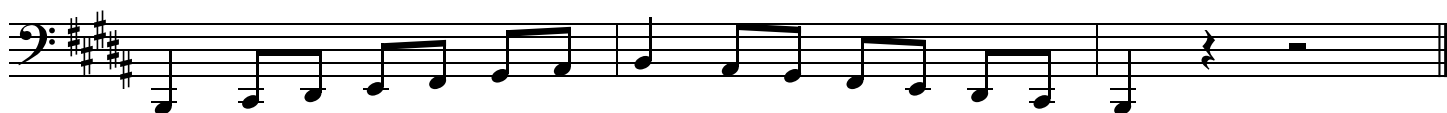


A \flat Concert



A Concert



B \flat Concert**B Concert****C Concert****D \flat Concert****Chromatic (may be played in either eighth notes or triplets)**

STUDENTS MUST USE ONE OF THE RHYTHMIC CHOICES BELOW



Major scales must be played with the prescribed rhythm pattern indicated on the

MTSBOA approved scale sheets.

MTSBOA 9/10 Grade Mallet Scales

2025

Minimum required tempo 100 bpm

C Concert



D \flat Concert



D Concert



E♭ Concert



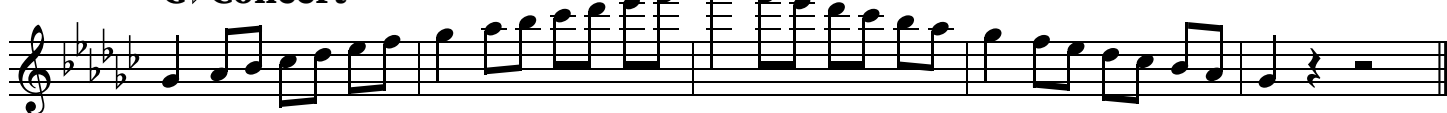
E Concert



F Concert



G \flat Concert



G Concert



A \flat Concert**A Concert****B \flat Concert****B Concert****Chromatic (may be played in either eighth notes or triplets)**

STUDENTS MUST USE ONE OF THE RHYTHMIC CHOICES BELOW



Major scales must be played with the prescribed rhythm pattern indicated on the

MTSBOA approved scale sheets.

MTSBOA 9-10 Percussion Rudiments

All rudiments should be performed open (slow) to close (fast) to open

Required rudiments are marked with ★

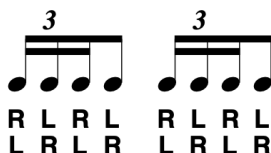
I. ROLL RUDIMENTS

A. SINGLE STROKE ROLL RUDIMENTS

1. SINGLE STROKE ROLL *



★ 2. SINGLE STROKE FOUR



3. SINGLE STROKE SEVEN



B. MULTIPLE BOUNCE ROLL RUDIMENTS

★ 4. MULTIPLE BOUNCE ROLL



5. TRIPLE STROKE ROLL

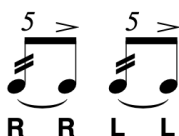


C. DOUBLE STROKE OPEN ROLL RUDIMENTS

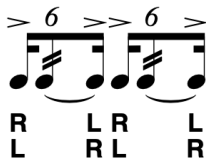
★ 6. DOUBLE STROKE OPEN ROLL *



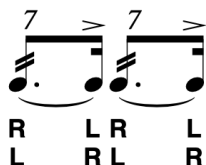
★ 7. FIVE STROKE ROLL *



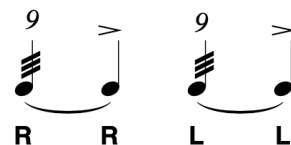
8. SIX STROKE ROLL



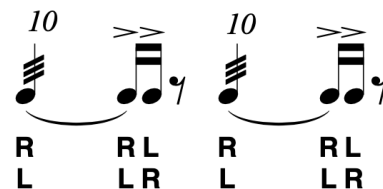
★ 9. SEVEN STROKE ROLL *



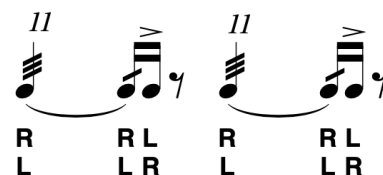
10. NINE STROKE ROLL *



11. TEN STROKE ROLL *



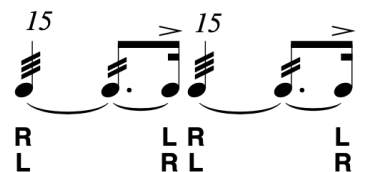
12. ELEVEN STROKE ROLL *



13. THIRTEEN STROKE ROLL *



14. FIFTEEN STROKE ROLL *



15. SEVENTEEN STROKE ROLL



II. DIDDLE RUDIMENTS

16. SINGLE PARADIDDLE *



17. DOUBLE PARADIDDLE *



18. TRIPLE PARADIDDLE



19. SINGLE PARADIDDLE-DIDDLE






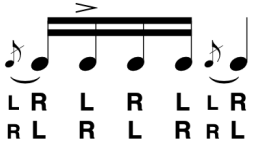




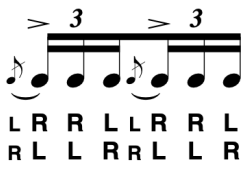


* These rudiments are also included in the original Standard 26 American Drum Rudiments.
Copyright © 1984 by the Percussive Arts Society™, 110 W. Washington Street, Suite A, Indianapolis, IN 46204
International Copyright Secured All Rights Reserved

MTSBOA 9-10 Percussion Rudiments




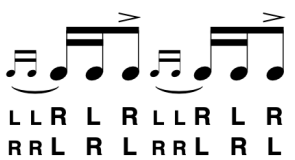





All rudiments should be performed open (slow) to close (fast) to open

Required rudiments are marked with ★

III. FLAM RUDIMENTS

- ★ 20. FLAM * 
- ★ 21. FLAM ACCENT * 
- ★ 22. FLAM TAP * 
- ★ 23. FLAMACUE * 
24. FLAM PARADIDDLE * 
25. SINGLE FLAMMED MILL 
26. FLAM PARADIDDLE-DIDDLE * 
27. PATAFLAFLA 
28. SWISS ARMY TRIPLET 
29. INVERTED FLAM TAP 
30. FLAM DRAG 

IV. DRAG RUDIMENTS

31. DRAG *  ★
32. SINGLE DRAG TAP *  ★
33. DOUBLE DRAG TAP * 
34. LESSON 25 * 
35. SINGLE DRAGADIDDLE 
36. DRAG PARADIDDLE #1 * 
37. DRAG PARADIDDLE #2 * 
38. SINGLE RATAMACUE *  ★
39. DOUBLE RATAMACUE * 
40. TRIPLE RATAMACUE * 